



## JINWOO SMC CO., LTD.

### **Head Office / Gimje plant**

Address : #20, Baekgu Gongdan 1 Gil,  
Baekgu-myun, Gimje City, Jeollabuk Province, R.O.K  
Tel. +82-63-770-7277 Fax. +82-63-770-7276  
Web-site : [www.jinwoosmc.com](http://www.jinwoosmc.com)  
E-mail : [jinwoosmc1@jinwoosmc.com](mailto:jinwoosmc1@jinwoosmc.com)  
[jinwoosmc4@jinwoosmc.com](mailto:jinwoosmc4@jinwoosmc.com)

### **Iksan Plant**

Address : #353, Sugam-Ro, Chunpo-Myun,  
Iksan-City, Jeollabuk Province, R.O.K  
Tel. +82-63-838-2529 Fax. +82-63-838-2527

# INTRODUCTION TO PRODUCTS CATALOGUE

JINWOO'S HIGH TECHNOLOGY LEADS YOU TO COMPETITIVE BUSINESS







### As a Global Enterprise JINWOOSMC is spreading throughout the world!

Established in 1992 as a Special Machineries company, we started to mass produce “Elevating Work Platforms” from 1998 as the country was focusing on reconstruction due to IMF crisis. Due to expansion in our products range, we established limited company “JINWOO SMC Co., Ltd.” in 2007. We started to produce various kinds of multi-purpose special machineries according to the technological trends in domestic as well as international markets.

Due to advancement of innovative high-end technologies in Korea, huge overseas demands for Korean products exist all-around the world. We started export in 2008 to Iraq ; followed by Middle-East, Asia in 2009 & mainly Canada, Philippines and Singapore in 2010. Thereafter ; to Iraq, Bangladesh, Iran, UAE, Vanuatu, Saudi Arabia, China, India since 2011. Then expanded export to Malaysia, Russia, Ghana in 2012 ; Peru, Indonesia, Vietnam in 2013 ; Kuwait, Uzbekistan, Turkmenistan in 2014 ; Thailand, Sri Lanka, Qatar in 2015, and since then we have been exporting to these countries for the repeated orders in 2016~2020.

Especially, we developed Demolition and Rescue Fire-fighting vehicle for first time in Korea in 2015, since then 14 units are delivered by successful bid to the Korean government-“Ministry of Public Safety and Security” as well “National 119 Rescue Headquarters”. Hence, we set-up mass production, special design and testing centers in newly established Head-office in 2020. So we set up mass production system, and presently participating in global tenders.

## MANAGEMENT HISTORY

- 2004 : Nominated as the promising upcoming Medium and Small Enterprise by Korean Government
- 2005 : Establishment of exclusive Research and Development center
- 2006 : Nominated as a Venture Business by Korean Government  
Approved as the Technology Innovation mode of Enterprise (INNO-BIZ) by Korean Government  
Grant of ISO 9001 : 2000 certification  
Issue of ISO 14001 : 2004 – Safety and Cleanliness recognition from Quality Management System for Environmental Safety certification
- 2007 : Jinwoo SMC Co. Ltd. was established with Jinwoo Machinery as its subsidiary.
- 2009 : Grant of ISO 9001 : 2008 certification  
Approval Certification by Korea Food and Drug Administration for Super Specialty Ergonomic Medical Bed ~ Govt.  
Sponsored Health Care Project Export of Aerial Work Platforms to Middle-East worth more than 1.5Million USD  
Nominated as Reliable and Promising Export SME by Govt. Authority
- 2010 : Innovation of World's First Self-Propelled Bridge Maintenance Unit for Singapore Govt.  
Approval of ANSI92.2 – 2009 Certification for our Canada Exported Model
- 2011 : Awarded One Million Dollar's Export Volume Performance by Korea Int'l Trade Association.
- 2012 : Extension of ISO 9001 : 2008 and ISO 14001 : 2004  
Approval of GOST Certification for our Russian Exported Model  
Passed Certificate of ANSI 92.2 ~ 2009.  
Grant of Clean Workplace Certification
- 2015 : Approval of CE Certificate for our European Exported Models
- 2016 : Produced and delivered 4 units of "Demolition and Rescue Fire-Suppression Fighter Water Cannon" to Korean government.
- 2017 : Nominated as G-PASS company. Designated an excellent company for invention & production of DRFF.
- 2018 : Approval of CU Gost certificate for exporting to CIS countries.  
Received Excellence Award from prime minister for firefighting vehicle.
- 2020 : Succeeded to obtain KFI(Korea Fire Institute) Certification for Compact 20m Boom Firefighter(3.5 ton). Acquired Excellent Performance Certification (EPC) for compact 20m Boom Firefighter (3.5 ton).  
Succeeded to obtain KFI (Korea Fire Institute) Certification for Compact 20m Boom Firefighter (5 ton) with Water-Tank

## DESIGN ACHIEVEMENT HISTORY

- 1992 : Automatic Control Systems for Industrial machineries
- 1998 : Establishment of Jinwoo Machinery Corporation
- 1999 : Design and Production of 8m, 12m and 14.5m Telescopic and Z-link Type MEWP
- 2000 : Design and Production of 18m Telescopic Aerial Work Platform
- 2001 : Design, Development and Production of 21m telescopic type
- 2002 : Design and Development of 29m -first time with end-articulated Boom
- 2003 : 24m and 32m were designed successfully at first attempt
- 2004 : Design and Production of 48metres end-articulated type
- 2005 : Advanced, Design and production of Diplo320 and Diplo400
- 2006 : Release of Customized 49m with end-articulated Boom & 65m Telescopic Boom
- 2007 : Advanced Design of 45m Rear type, 67m – Highest range product
- 2008 : Release of Special vehicles for Health care ~ Korean Govt.  
Projects Highest range of 75m is developed and released in local market achieving 70% share
- 2009 : Joint-Development of Fully Integrated Universal Mechatronic Control System.
- 2010 : Design of world's first ever compact, light-weight, self-propelled Bridge Maintenance special machinery for, and approved, by Singapore govt.
- 2011 : Special design of 32m Jib Boom type Mobile Elevating Work Platform for Canadian customer for his local American vehicle which passed ANSI 92.2 – 2009 Certification
- 2012 : Developed and Produced Ladder Lift Truck (25m)
- 2013 : Development and release of Mini Breaker (1ton)
- 2014 : Development of World's highest 35m(3.5tons) Sky Lander (Highlander), Compact Mini Breaker (2ton), Mobile kitchen truck, 45m (Articulating), 45m(new design)
- 2015 : Developed Demolition and Rescue Fire-Suppression Fighter Water Cannon, Vehicle Wireless Remote controlled–Korean type.  
Developed all chain type (28m, 32m, 45m) and acquired CE certificate.
- 2017 : Developed PHEV Garbage Truck
- 2018 : Developed all chain type ( 290CW, 300C, 300A/insulating, 320C, 380CW, 450CW, 450S, 580C) models.
- 2019 : Developed and tested compact light-weight 20m Boom Firefighter (3.5 ton). Developed 52m (Jinwoo540) Working Height all-chain model, for sophisticated works
- 2020 : Developed and tested compact 20m Boom Firefighter (5 ton) with Water-Tank.
- 2021 : Developed 46m(Jinwoo 460L), 29m and 32m working height with auto transmission vehicle.





AERIAL ELEVATING WORK PLATFORM  
**JINWOO 750**



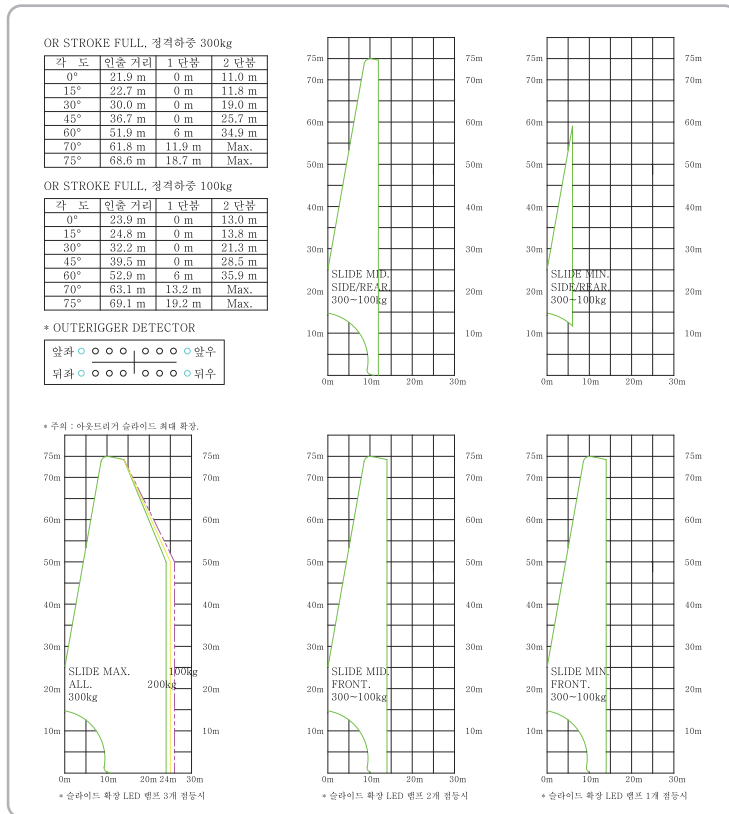
AERIAL ELEVATING WORK PLATFORM

# JINWOO 750

## BOOM EXTENSION BY ALL CHAIN TYPE

- Dual stage Auto-program controlled 10 Telescopic Booms for cadence movements and failure-proof enhanced safety.
- Domex700 Special treated corrosion resistant steel for Booms to minimize drooping/moment.
- All Booms extend and retract by All-Chain mechanism for longevity and almost nil maintenance

### WORK AREA DIAGRAM



### SPECIFICATION

JINWOO 750 SPECIFICATION				
Contents		Unit	Data	Remarks
Permissible Mounting Vehicle		Ton	Min. 34 GVW	8x4
Max. Working Load	Payload	kg	300	Including 3 persons
	Length	mm	12,990	Transport dimension
Product's Dimension (with Vehicle)	Height	mm	3,990	
	Width	mm	2,495	
Working Area	Max. Height	m	75	Including Operator height
	Max. Outreach	m/kg	24 - 300 / 28 - 100	Outrigger Max. extended
Work Platform	Dimension	mm	1,830 * 500 * 300	Basic
			3,230 * 1,030 * 1,100	Extended
Boom	Rotation Angle	deg.	360 continuous	±720
	Type		Octagonal	8 edges
Turntable Rotation	Number of Booms		10	Telescopic
	Extension		By hydraulic Cylinder & Chain	Dual stage
Hydraulic Pump Drive Type	Type		Slewing Bearing with Hydraulic Reduction Gears	Minimal backlash
	Rotation Angle	deg.	360 continuous	±720
Outrigger	Engine		P.T.O	Minimal backlash
	Width	mm	Front : 8,000 ; Rear : 8,045	Different positioning
Valve control	Extension		Hydraulic Cylinders, Wire	
	Type		X - A	Patented
Remote control	Type		By lever	All controls
	Remote control		Wireless	Upper controls only

Note : The above specifications are bound to change without prior notification for better operators safety and due to changes in truck specifications.





# AERIAL ELEVATING WORK PLATFORM JINWOO 540M



1,374mm



3,800mm



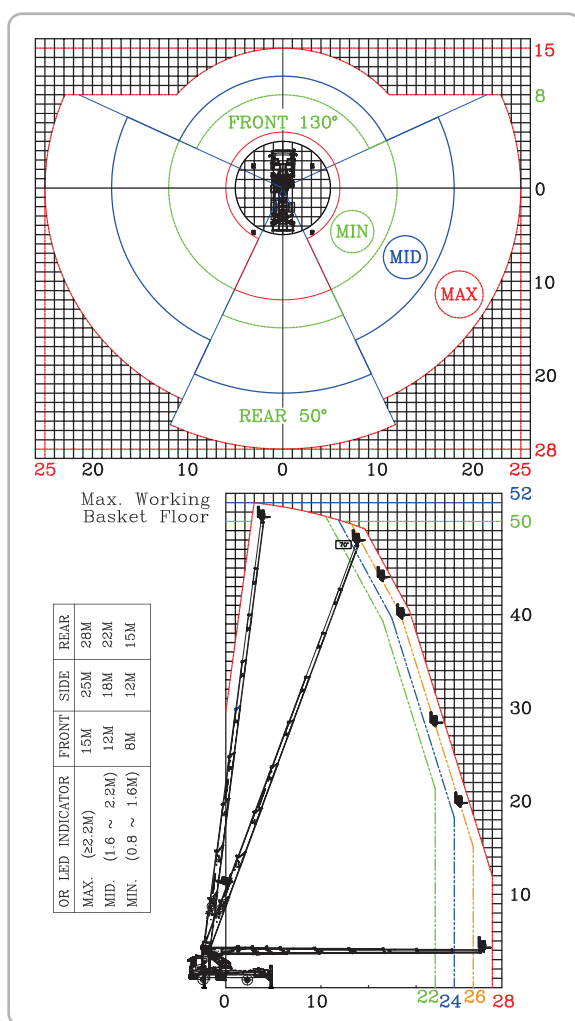
## AERIAL ELEVATING WORK PLATFORM

## JINWOO 540M

## OPTIMIZED FOR THE NARROW &amp; CONSTRAINED SPACE

- Short span Outrigger extension(1.4m) and compact transport dimension.
- Minimal Boom's bending as its produced from high-tensile special treated steel.
- All-chain type Boom operations for enhanced safety & minimal drooping.
- 2-stage Boom extension with program-controlled dual Extension cylinders.
- Minimized moment with enhanced 9-stage cadence Hexadecagon Booms (16 edges).

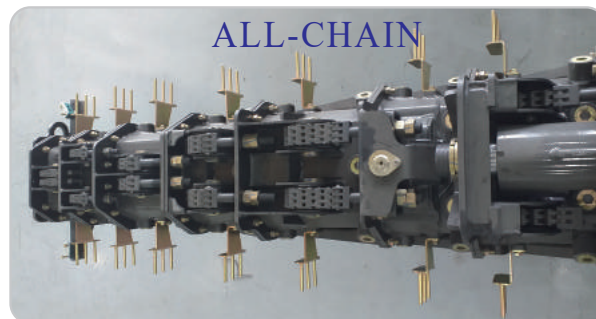
## WORK AREA DIAGRAM



## SPECIFICATION

JINWOO540M SPECIFICATION			
Contents	Unit	Data	Remarks
Permissible Mounting Vehicle	Ton	Min. 18.0 GVW	4x2
Max. Working Load	Payload	kg	400 (OPTIONAL 400Kgs Crane Winch)
Product's Dimension (with Vehicle)	Length	mm	9,010
	Height	mm	3,980
	Width	mm	2,495
Working Area	Max. Height	m	52
	Max. Outreach	m/kg	Rear : 22 - 400 / 28 - 100 Left/Right : 19 - 400 / 25 - 100 Front : 12 - 400 / 15 - 100
Work Platform	Dimension (L x D x H)	mm	1,830 * 500 * 1,100
	Rotation Angle	deg.	360deg. Continuous
Boom	Type		HexaDecagon
	Number of Booms		9
	Extension		Hydraulic Cylinders, Chain
Turntable Rotation	Type		By Hydraulic Reduction Gears
	Rotation Angle	deg.	350 ( ±175 )
Hydraulic Pump Drive Type	Engine		P.T.O
Outrigger	Width	mm	Front : 7,610 ; Rear : 6,630
	Extension		Hydraulic Cylinders, Wires
	Type		X-A
Operations and Controls	Type		Manual Lever
	Remote control		Portable Radio Wireless

Note : The above specifications are bound to change without prior notification for better operators safety and due to changes in truck specifications.





# AERIAL ELEVATING WORK PLATFORM JINWOO 460L/450S



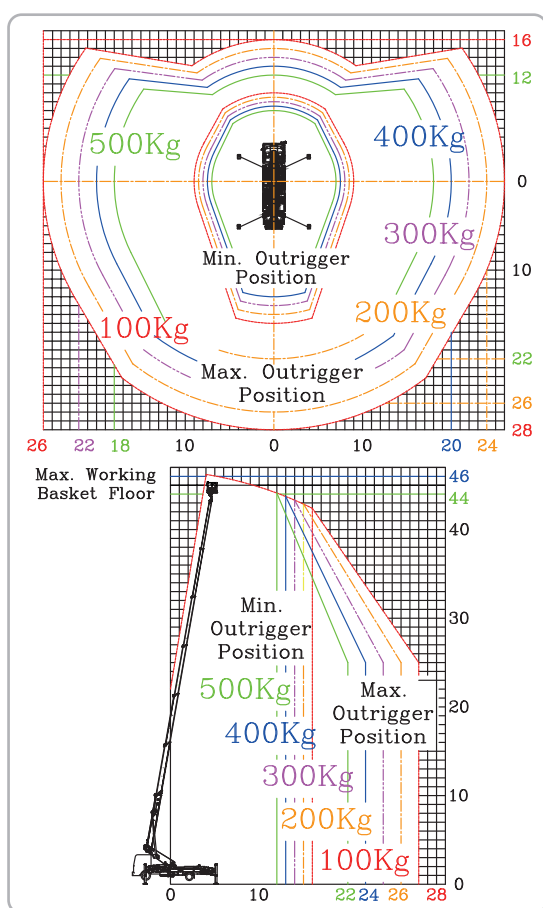
## AERIAL ELEVATING WORK PLATFORM

## JINWOO 460L / 450S

## HIGHER LEVEL PRODUCT MOUNTED ON THE HIGH LOAD CHASSIS(5 TON)

- 450S compact dual stage Boom model for constrained working area in urban and mega cities.
- All-chain type Boom for enhanced safety; minimizing moment as well repairs with zero maintenance.
- High Tensile, special treated Steel 7 stage Boom (8 ~ 16 edges).
- Increased cushion-like effect with special patented X-A style Stabilizer (Outrigger) system.
- Special Heavy payload 500kg Aluminium Platform for higher efficiency & convenience.

## WORK AREA DIAGRAM



## SPECIFICATION

JINWOO 460L / 450S SPECIFICATION				
Contents	Unit	JINWOO460L	JINWOO450S	Remarks
Permissible Mounting Vehicle	Ton	Min. 16.5 GVW		4x2
Max. Working Load	Payload Kg	500 (special design)	400	Including 3 persons
Product's Dimension (with Vehicle)	Length	mm	9,565	Transport dimension
	Height	mm	3,900	
	Width	mm	2,495	
Working Area	Max. Height	m	46	Including Operator height
	Max. Outreach	m/kg	22 - 500, 28 - 100	Outrigger Max. extended
Work Platform	Dimension (L x D x H)	mm	1,830 * 500 * 1,100	Basic
		mm	3,220 * 1,030 * 1,100	Extended
	Rotation Angle	deg.	360deg. Continuous	±720
Boom	Type		#1 to #3 Hexadecagon #4 to #7 Octagonal	Special 16 & 8 edges
	Number of Booms		7	Telescopic
	Extension		By hydraulic Cylinder, Chain	
Turntable Rotation	Type		Slewing Bearing with Hydraulic Reduction Gears	
	Rotation Angle	deg.	350 ( ±175 )	
Hydraulic Pump Drive Type	Engine		P.T.O	
Outrigger	Width	mm	Front : 8,460 Rear : 8,165	Program based Multiple positioning
	Extension		By hydraulic Cylinder, Wire	
	Type		X - A	
Operations and Controls	Type		Hydraulic Levers	
	Remote control		Portable Radio Wireless	

Note : The above specifications are bound to change without prior notification for better operators safety and due to changes in truck specifications.





AERIAL ELEVATING WORK PLATFORM  
**JINWOO 450A**



**PROFESSIONAL EQUIPMENT WITH HIGH DURABILITY  
USING TELESCOPIC & ARTICULATING BOOMS**

It is highly flexible and compact providing superior work reliability in complex work fields such as under bridges, below ground and any intricate work area requiring end articulating & telescopic booms.



## AERIAL ELEVATING WORK PLATFORM

# JINWOO 450A



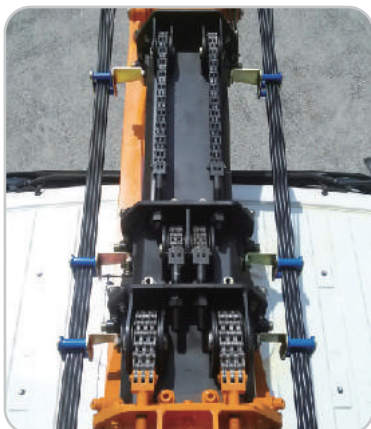
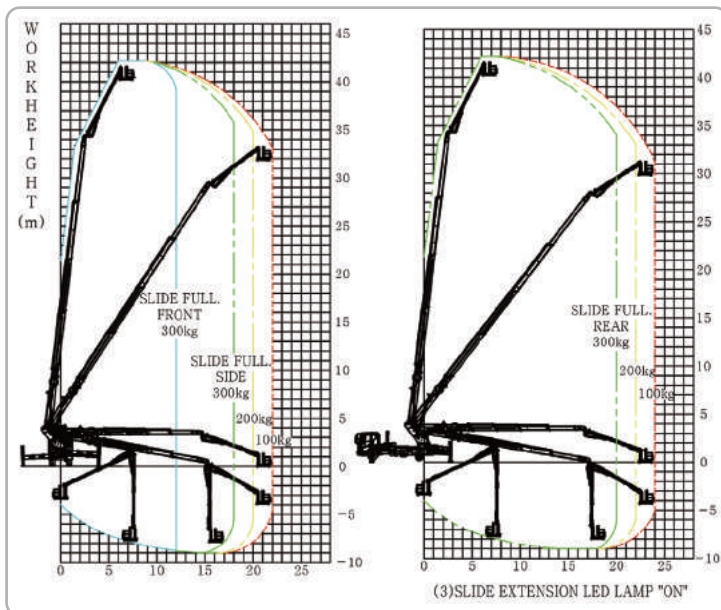
### SPECIFICATION

JINWOO450A SPECIFICATION

Contents	Unit	Data	Remarks
Permissible Mounting Vehicle	Ton	Min. 16.5 GVW	4x2
Max. Working Load	Payload	Kg	300 (special design)
Product's Dimension (with Vehicle)	Legth	mm	9,920
	Height	mm	3,955
	Width	mm	2,495
Working Area	Max. Height	m	42.5
	Max. Outreach	m/kg	Rear : 22 - 400 / 26 - 100 Left/Right : 18 - 300 / 22 - 100 Front : 10 - 400 / 15 - 100
Work Platform	Dimension (L x D x H)	mm	1,650 * 610 * 1,100
		mm	3,150 * 900 * 1,100
	Rotation Angle	deg.	360deg. Continuous
Boom	Type		Octagonal ( Telescopic ) Rectangular ( Articulating )
	Number of Booms		5 ( Telescopic ) 2 ( Articulating )
	Extension		Hydraulic Cylinders, Chains
Turntable Rotation	Type		Slewing Bearing with Hydraulic Reduction Gears
	Rotation Angle	deg.	350 ( ±175 )
Hydraulic Pump Drive Type	Engine		P.T.O
	Width	mm	Front : 8,520 ; Rear : 8,115
Outrigger	Extension		Hydraulic Cylinder & Wire
	Type		X - A
			Patented
Operations and Controls	Type		Hydraulic Levers
	Remote control		Portable Radio Wireless

Note : The above specifications are bound to change without prior notification for better operators safety and due to changes in truck specifications.

### WORK AREA DIAGRAM





# AERIAL ELEVATING WORK PLATFORM JINWOO 320J/370J



## PROFESSIONAL EQUIPMENT WITH HIGH DURABILITY USING TELESCOPIC & JIB ARTICULATING BOOMS

Jib Articulating Boom is highly flexible because of articulation point for the platform to move up and down; thereby providing greater versatility to reach narrow and confined work area which Telescopic Booms cant approach easily.

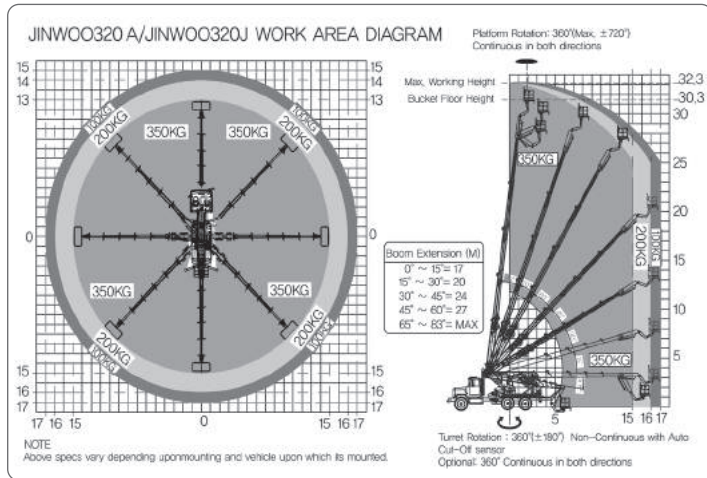




# AERIAL ELEVATING WORK PLATFORM

## JINWOO 320J/370J

### WORK AREA DIAGRAM





# AERIAL ELEVATING WORK PLATFORM JINWOO 320



320AH

4,000mm

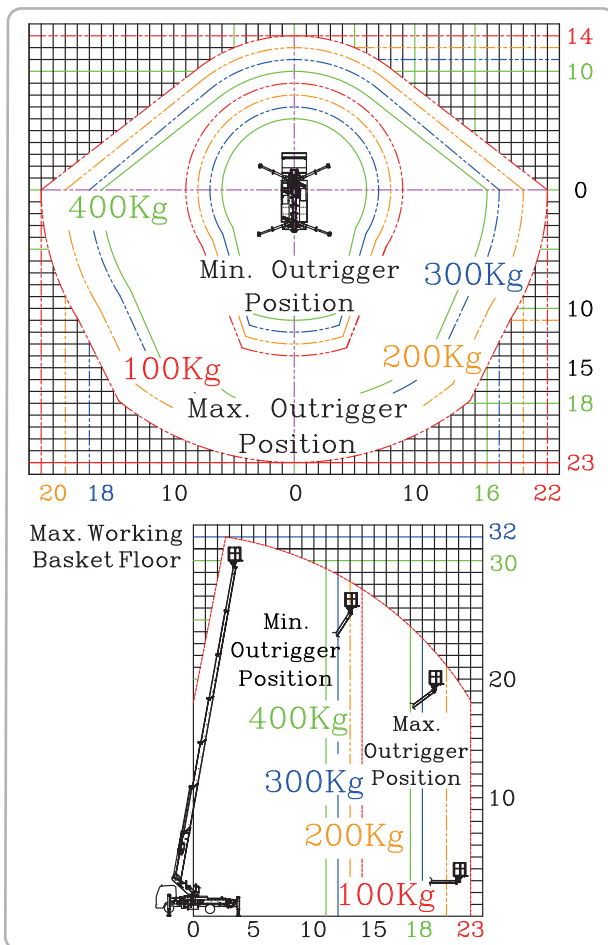


# JINWOO 320

## THE HIGHEST SAFETY & ABILITY TO WORK WITH THE CHASSIS (CENTRAL AXIS)

- All-chain type Boom for enhanced safety; minimizing moment as well repairs with zero maintenance.
- High Tensile, special treated Steel Hexadecagon 7 stage Boom (16 edges).
- Increased stability with our patented X-A style Stabilizer (Outrigger) system.
- Option of Front Submerged A-type Stabilizer system for longer front area working.
- Compact sized, with least Boom protrusion(67cms) avoiding in-coming vehicles traffic accidents.
- Minimalized Platform moment with large size Ring Gear below Work Platform.

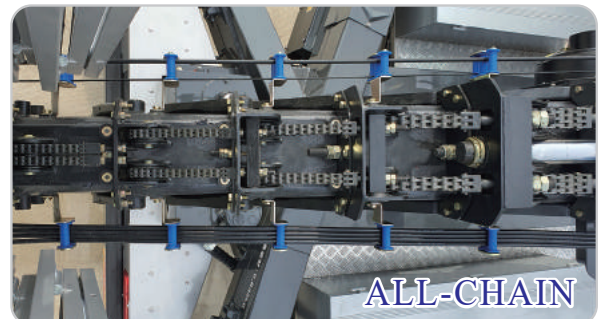
### WORK AREA DIAGRAM



### SPECIFICATION

JINWOO320 SPECIFICATION					
Contents		Unit	JINWOO320AH	JINWOO320AD	Remarks
Permissible Mounting Vehicle		Ton	Min. 9.0 GVW		4x2
Max. Working Load	Payload	Kg	400 (OPTIONAL 300Kgs Crane Winch)		Including 3 persons
Product's Dimension (with Vehicle)	Length	mm	6,785	7,100	Transport dimension
	Height	mm	3,070	3,110	
	Width	mm	2,150	2,360	
Working Area	Max. Height	m	32		Operator height
	Max. Outreach	m/kg	Rear : 18 - 400 / 23 - 100 Left/Right : 16 - 400 / 22 - 100 Front : 10 - 400 / 14 - 100		Outrigger Max. extended
Work Platform	Dimension (L x D x H)	mm	1,830 * 500 *1,100		Basic
			3,230 * 1,030 *1,100		Extended
	Rotation Angle	deg.	360deg. Continuous		±720
Boom	Type		HexaDecagon		16 edges
	Number of Booms		7		Telescopic
	Extension		Hydraulic Cylinders, Chains		Single stage
Turntable Rotation	Type		Slewing Bearing with Hydraulic Reduction Gears		Minimal backlash
	Rotation Angle	deg.	350 ( ±175 )		Auto Cut-off
Hydraulic Pump Drive Type	Engine		P.T.O		Electric type
Outrigger	Width	mm	Front : 5,870 Rear : 6,035	Front : 5,980 Rear : 6,070	Different positioning
	Extension		Hydraulic Cylinder, Wire		
	Type		X - A		Patented
Operations and Controls	Type		Hydraulic Levers		All controls
	Remote control		Portable Radio Wireless		Upper controls only

Note : The above specifications are bound to change without prior notification for better operators safety and due to changes in truck specifications.





# AERIAL ELEVATING WORK PLATFORM JINWOO 290



351mm



4,880mm



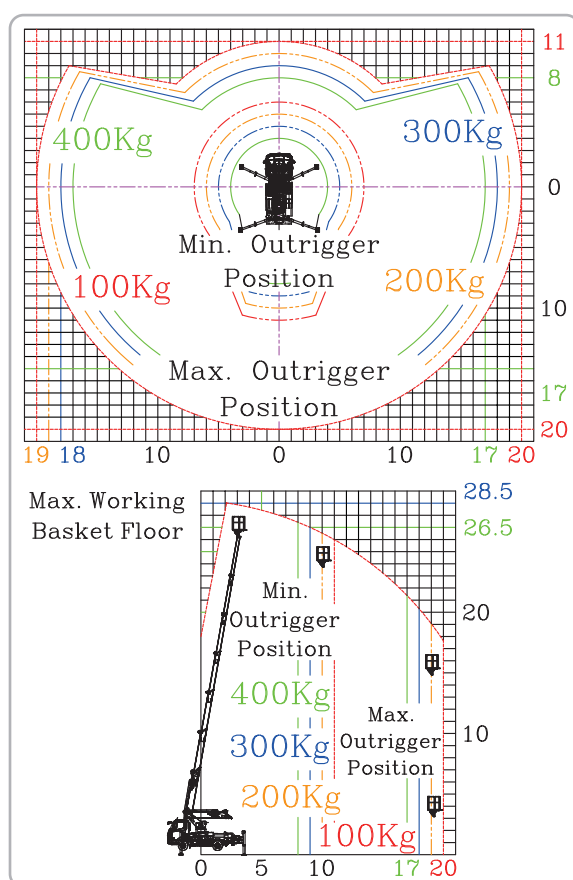
AERIAL ELEVATING WORK PLATFORM

## JINWOO 290

## VERY EASY TO WORK IN THE NARROW SPACE

- Compact sized with least protrusion(35cms) of Boom, avoiding in-coming vehicles traffic accidents .
- High Tensile, special treated Steel Hexadecagon 7 stage Boom (16 edges).
- Most compact sized for complex working space in Urban and mega cities.
- Minimalized Platform moment with large size Ring Gear below Work Platform.
- Fully Programmed Auto control system based on multi positioning of Outriggers.

## WORK AREA DIAGRAM



## SPECIFICATION

JINWOO290AD SPECIFICATION				
Contents		Unit	Data	Remarks
Permissible Mounting Vehicle		Ton	Min. 10 GVW	4x2
Max. Working Load	Payload	kg	400 (OPTIONAL 300Kgs Crane Winch)	Including 3 persons
	Length	mm	6,030	
	Height	mm	3,250	Transport dimension
Product's Dimension (with Vehicle)	Width	mm	2,200	
	Max. Height	m	28.5	Operator height
	Max. Outreach	m/kg	Rear : 17 - 400 / 20 - 100 Left/Right : 17 - 400 / 20 - 100 Front : 8 - 400 / 11 - 100	Outrigger Max. extended
Working Area	Dimension	mm	1,830 * 500 * 1,100	Basic
	Rotation Angle	deg.	360deg. Continuous	±720
Boom	Type		HexaDecagon	16 edges
	Number of Booms		7	Telescopic
	Extension		Hydraulic Cylinders, Chain	Single stage
Turntable Rotation	Type		Slewing Bearing with Hydraulic Reduction Gears	Minimal backlash
	Rotation Angle	deg.	350 ( ±175 )	Auto Cut-off
Hydraulic Pump Drive Type	Engine		P.T.O	Electric type
Outrigger	Width	mm	Front : 5,980 ; Rear : 6,070	Different positioning
	Extension		Hydraulic Cylinders, Wires	
	Type		X-A	Patented
Operations and Controls	Type		Hydraulic Lever	All controls
	Remote control		Portable Radio Wireless	Upper controls only

Note : The above specifications are bound to change without prior notification for better operators safety and due to changes in truck specifications.





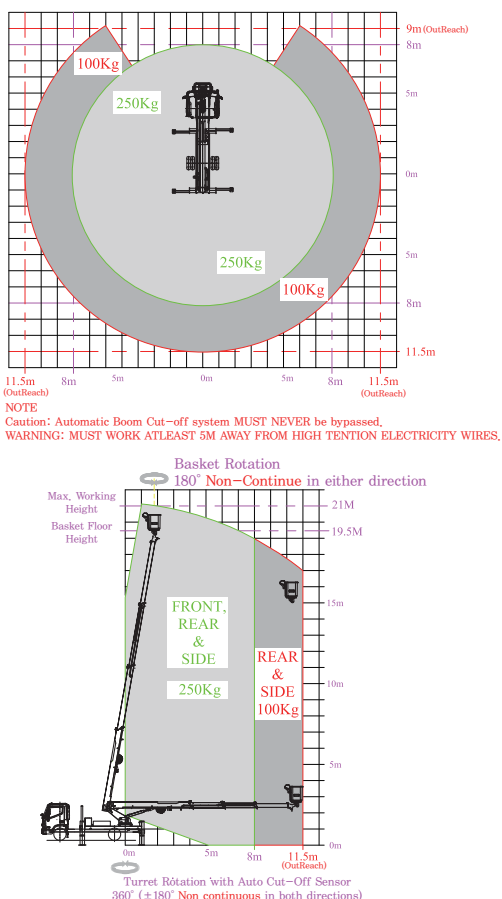
# AERIAL ELEVATING WORK PLATFORM JINWOO 210R



## SPECIAL REAR-MOUNT STYLE DESIGN FOR TRADITIONAL FLEXIBLE APPROACH

- Rear mounted Swing special design with multi-positioning H-H stabilizer system.
- Special Programless Automatic Cut-off system for Outtrigger position based working area.
- Operator housing Hydraulic controls station on Turret.

### WORK AREA DIAGRAM



### SPECIFICATION

JINWOO210R SPECIFICATION				
Contents		Unit	Data	Remark
Permissible Mounting Vehicle		Ton	Min. 7.0 GVW	4x2
Max. Working Load	Payload	Kg	250 (OPTIONAL 200Kg Crane Winch)	Including 2 persons
Product's Dimension (with Vehicle)	Length	mm	5,810	Transport dimension
	Height	mm	3,580	
	Width	mm	2,090	
Working Area	Max. Height	m	20.5	Operator height
	Max. Outreach	m/kg	8.5 - 250 / 11.5 - 100	Outtrigger Max. extended 20KV Insulated
Work Platform	Dimension L x W x H	mm	1,280 * 850 * 1,000 1,850 * 950 * 1,100	Steel
	Rotation Angle	deg.	±100 / 360deg. Continuous	Std. / Optional
Boom	Type		Rectangular	4 edges
	Number of Booms		4	Telescopic
Turntable Rotation	Extension		Hydraulic Cylinder, Chains	Single stage
	Type		Slew Drive with Hydraulic Reduction Gear	Minimal backlash
Hydraulic Pump Drive Type	Rotation Angle	deg.	350 ( ±175 )	Auto Cut-off
	Engine		P.T.O	Electric type
Outtrigger	Width	mm	Front : 5,710 ; Rear : 5,910	Different positioning
	Extension		Hydraulic Cylinders, Wires	
	Type		H - H	Hydraulic
Operations and Controls	Type		Hydraulic Levers	All controls
	Remote control		Portable Radio Wireless	Upper controls only

Note : The above specifications are bound to change without prior notification for better operators safety and due to changes in truck specifications.

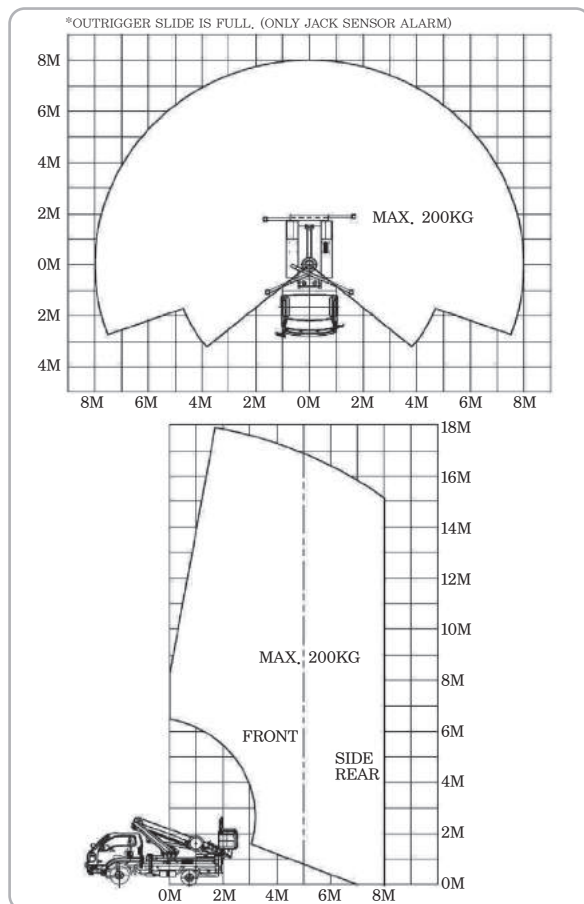
# AERIAL ELEVATING WORK PLATFORM JINWOO 180



## HIGH LEVEL WORK CAPABILITY & EFFICIENCY WITH ALL CHAIN TYPE OF BOOM

- Suitable in the narrow working area. Greater mobility with compact 3.5 ton GVW truck.
- Boom material is DOMEX700 steel to minimize drooping
- H-H or X-H type outrigger.
- All of boom's extension & retraction are chain type for safety.

### WORK AREA DIAGRAM



### SPECIFICATION

JINWOO180 SPECIFICATION						
Contents		Unit	Type 1		Type 2	Remarks
Permissible Mounting Vehicle		Ton	Min. 5 GVW		Min. 3.5 GVW	4x2
Max. Working Load	Payload	Kg	220			Including 2 persons
Product's Dimension (with Vehicle)	Length	mm	6,450		5,640	Transport dimension
	Height	mm	2,750		2,610	
	Width	mm	2,050		1,980	
Working Area	Max. Height	m	18			Operator height
	Max. Outreach	m/kg	8.5 - 220 / 11.0 - 100			Outrigger Max. extended
Work Platform	Dimension (L x D x H)	mm	1,280 * 850 * 1,090			FRP Insulated
			2,460 * 1,000 * 1,100			Steel
	Rotation Angle	deg.	360deg. Continuous			±720
Boom	Type		Rectangular			Special treated
	Number of Booms		4		5	Telescopic
	Extension		Hydraulic Cylinder, Chains			
Turntable Rotation	Type		Slewing Bearing with Hydraulic Reduction Gears			Minimal backlash
	Rotation Angle	deg.	350 ( ±175 )			Auto Cut-off
Hydraulic Pump Drive Type	Engine		P.T.O			Electric type
Outrigger	Width	mm	Front : 3,380 Rear : 3,380		Front : 3,250 Rear : 3,440	Different positioning
	Extension		Hydraulic Cylinder, Wire			
		Type		H - H		X - H
Operations and Controls	Type		Hydraulic Levers			All controls
	Remote control		Electronic Control Unit		Portable Radio Wireless	

Note : The above specifications are bound to change without prior notification for better operators safety and due to changes in truck specifications.



# AERIAL ELEVATING WORK PLATFORM JINWOO 130/100



## STRONG AND SAFE WITH ALL CHAIN TYPE OF BOOM

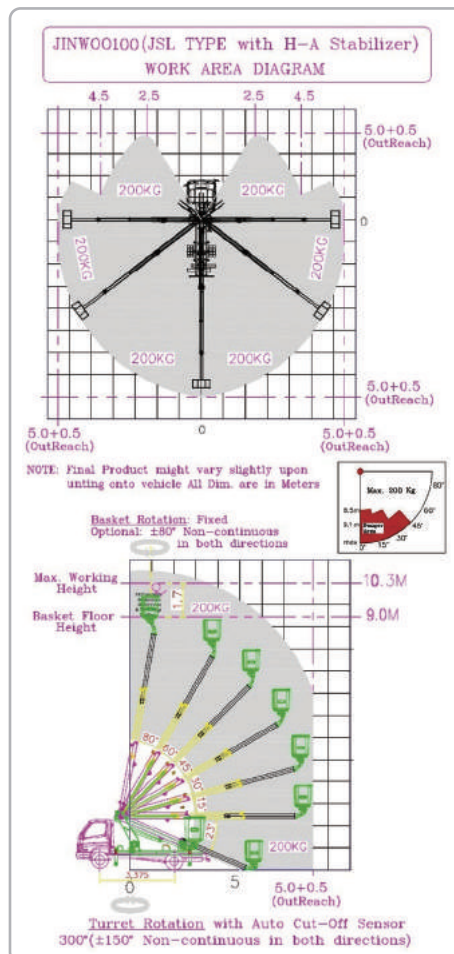
- One person is possible to work for telephone pole, electrical wire and communication line.
- H-A or X-H type outrigger.
- All of boom's extension & retraction are chain type for safety.

### | SPECIFICATION |

JINWOO130 / JINWOO100 SPECIFICATION					
Contents		Unit	JINWOO130	JINWOO100	Remark
Permissible Mounting Vehicle		Ton	Min. 4.5 GVW	Min. 3.5 GVW	4x2
Max. Working Load	Payload	Kg	220 ( OPTIONAL 100Kgs Crane Winch )	200	Including 2 persons
Product's Dimension (with Vehicle)	Length	mm	5,515	4,100	Transport dimension
	Height	mm	2,380	2,370	
	Width	mm	1,745	1,960	
Working Area	Max. Height	m	13.2	10.2	Operator height
	Max. Outreach	m/kg	6.5 - 200 10.5 - 100	6.5 - 200 8.5 - 100	Outrigger Max. extended
Work Platform	Dimension L x W x H	mm	1,090 * 790 * 960 (20KV)		FRP Insulated
			1,820 * 800 * 1,100		Steel
	Rotation Angle	deg.	±80		±180 Optional
Boom	Type		Rectangular		4 edges
	Number of Booms		3	2	Telescopic
	Extension		Hydraulic Cylinder, Chains		Single stage
Turntable Rotation	Type		Slew Drive with Hydraulic Reduction Gear		Minimal backlash
	Rotation Angle	deg.	350 ( ±175 )		Auto Cut-off
Hydraulic Pump Drive Type	Engine		P.T.O		Electric type
Outrigger	Width	mm	3,100		Different positioning
	Extension		Hydraulic Cylinders, Wires		
		Type		H-H / H-A	
Operations and Controls	Type		Hydraulic Levers		All controls
	Upper controls		Electronic Control Box or Hydraulic Levers		Optional

Note : The above specifications are bound to change without prior notification for better operators safety and due to changes in truck specifications.

### | WORK AREA DIAGRAM |





# MINI BREAKER (DEMOLITION MACHINE) JINWOO B020D



**MAX. LIFTING LOAD IS 3.5 TON ! MAX. WORKING HEIGHT IS 4M !**

- Possible to work in the narrow area by wireless remote control system

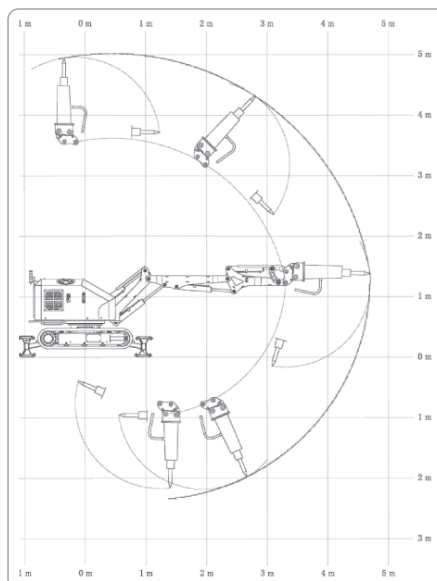
## SPECIFICATION

		JINWOO B020D	
Contents	Unit	Data	
Gross weight (Breaker included)		kg	2100
Product's Dimension (Breaker included)	Length	mm	2760
	Height	mm	1290
	Width	mm	930
Working Area (Based on rotation center and ground)	Front direction	mm	4650
	Upward direction	mm	5000
	Downward direction	mm	2150
	Rotation radius	deg	360(continuous)
Operation specs.	Rotation speed	deg/s	29 sec/360°
	Driving speed	m/s	0.7
	Gradability	deg	30
	No. of booms	no.	3
Boom system	Operations by	Cylinder	
	No. of cylinders	no.	4
Attachments *Breaker-basic *Bucket/crusher-option	Breaker(impact energy)	Joule	447
	Bucket(capacity)	m3	0.073
	Crusher(opening width)	mm	372
Hydraulic system	Pump flow type	ℓ/min	59
	Pump type	Piston pump	
	Operation pressure	bar	140
	Oil tank capacity	ℓ	20
Main hydraulic control valve	No. of valves	no.	10
	Control type	Portable wireless(Radio)	
Wireless remoon	Transceiving range	m	above 50
	No. of channel	no.	8(A-H)
	Function	On/off, Control	
Engine drive system	No. of cylinders	no.	3
	Displacement	cc	1007
	Fuel	Diesel	
	Cooling system	by water	
	Starting type	Auto-electric	
	Rated output	kW	22
	Input voltage		
	No. of rated output	rpm	2800
	No. of max. rotation	rpm	3000
	Fuel Tank	ℓ	15

Note : The above specifications are bound to change without prior notification for better operator's safety and due to changes in truck specifications.



## WORK AREA DIAGRAM





# SELF PROPELLED BOOM LIFT JINWOO BR400

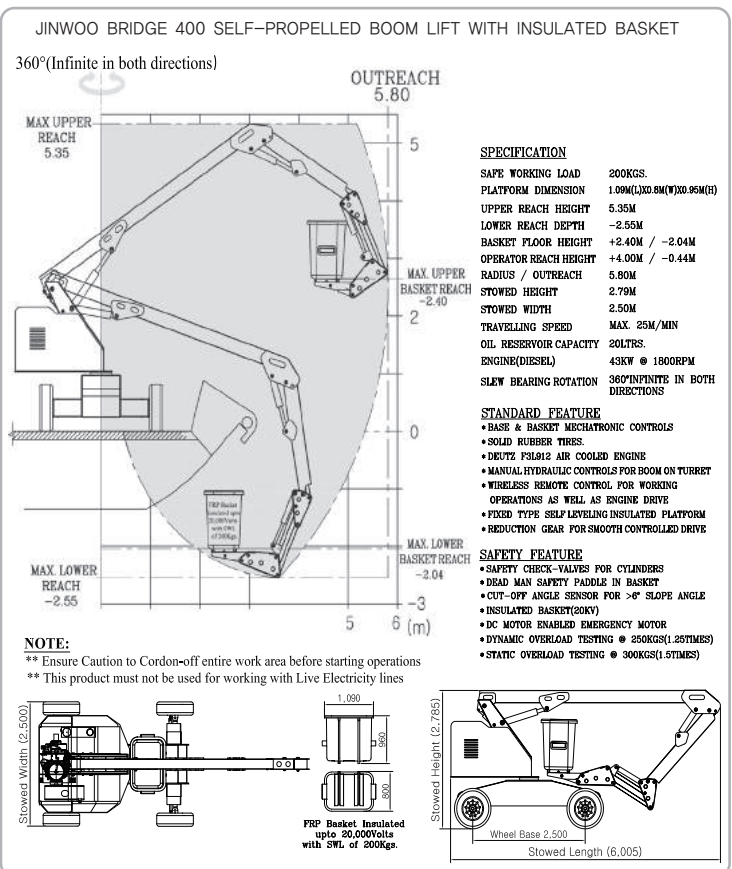


## SPECIFICATION

Vehicle Mounted Aerial Access FRP Basket ~ Telescopic type(straight)			
DESCRIPTION		UNITS	JINWOO BR400
Working Load	Load	kg	200 (Operator included)
Vehicle	Overall Length	mm	6,001
	Overall Height	mm	2,782
	Overall Width	mm	2,500
Working Area	Height	m	+2.73 / -2.04
	Work radius	m	5.8
Platform (FRP)	Size	mm	1090*800*960
Boom	Type	-	Rectangular
	Singular Booms	-	1 step + Articulating Boom + Link
	Operating Type	-	Hydraulic Cylinder
Turn Table Rotation	Type	-	Hydraulic Reducer
	Rotation Angle	degree	360 (Limitless)
Hydraulic Pump Driving Type	Engine	kw/rpm	40/2,500
Valve Control	Type	-	Lever type (on emergency)
	Remote Control	-	Wired

Note :The above specifications are bound to change without prior notification for better operator's safety and due to changes in truck specifications.

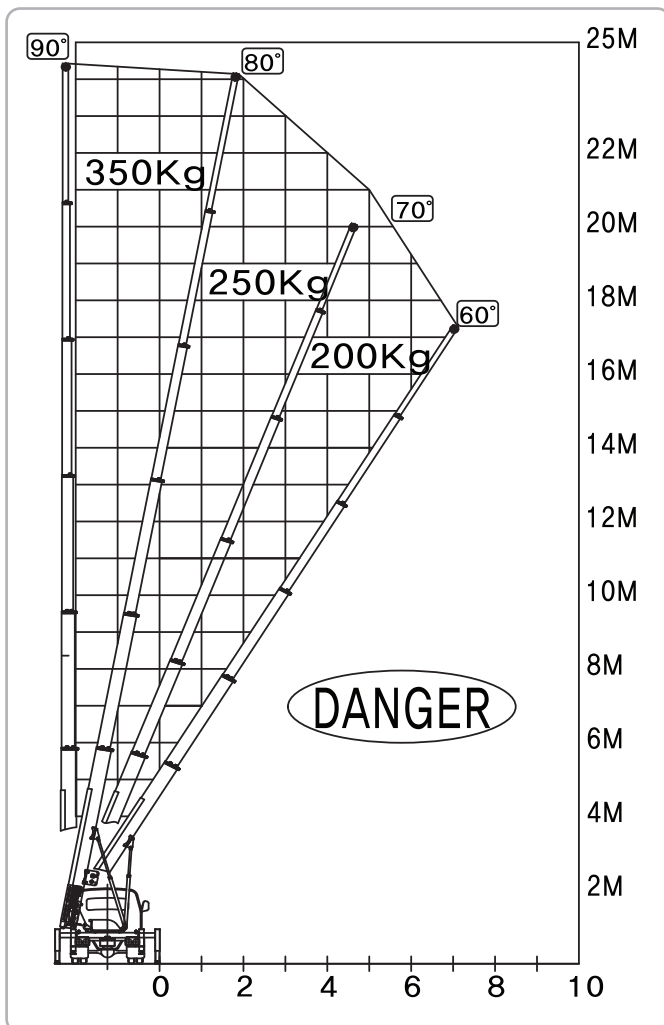
## WORK AREA DIAGRAM



# LADDER LIFT TRUCK JINWOO L250



## WORK AREA DIAGRAM



## SPECIFICATION

JINWOO L250 SPECIFICATION			
Contents		Unit	Data
Mounting Truck		ton	4.5 GVW
Max. working floor of building		fl	9
Max. Height		m	25
Product's Dimension (with Vehicle)	Length	mm	5,200
	Height	mm	1,740
	Width	mm	2,600
Power	Engine		P.T.O
Turntable	Rotation Angle	deg.	±135
	Type		By hydraulic reduction gear
Boom	Number of booms		7
	Material		High tension, aluminum alloyed
	Extension		By wire main/supplementary : 8mm
Lifting Conveyance	Dimension	mm	Basic : 1,300*1,000*520 Extended : 2,220*1,470*70
	Angle control		by one touch
	Max. working load	kg	350
Max. operation speed	Booms extension/retraction	m/m	within 24
Outrigger	Type		H-TYPE
	Extension		Slide ~ Manual Jack ~ Hydraulic Cylinder
	Max. Extension	mm	3,650
Remote control	Type		Dial(wired, wireless)
	Function		Automatic conveying
Safety system	Hydraulic check valve, Solenoid valve, Emergency stop, Sensor of over load, Sensor of speed reducing area, Warning system of max. height, Protection system for over turn.		

Note : The above specifications are bound to change without prior notification for better operator's safety and due to changes in truck specifications.



# HIGH(SKY) LANDER JINWOO H3535





# HIGH (SKY) LANDER JINWOO H3535

**MAX. LIFTING LOAD IS 3.5 TON ! MAX. WORKING HEIGHT IS 37M !**

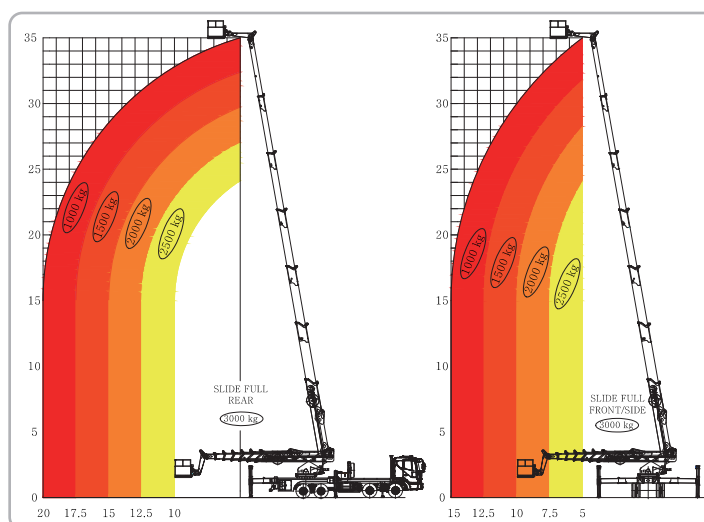
- Possible to drive at high speed because of mounting truck.
- Possible to load mini forklift inside super-structure behind vehicle cabin.

## SPECIFICATION

JINWOO H3535 SPECIFICATION			
Contents	Unit	Data	Remarks
Mounting Truck	Ton	36 GVW	8X4 Axle
Working capability	Load	kg	3,000
	Length	mm	12,550
	Height	mm	3,970
Product's Dimension (with Vehicle)	Width	mm	2,500
	Height	m	37
Working Area	Radius	m/kg	10/3,000 ~ 20/1,000
	Size(fixed)	mm	2,120*1,100*1,120
Platform	Tilt angle		± 60
			max.
Boom	Shape	deg.	Square/round corner
	No. of booms		6
	Extrusion type	no.	By 2 cylinder, chain linked
Turntable Rotation	Type		Hydraulic
	Angle		360
Hydraulic Pump Drive Type	Engine	deg	P.T.O
	Width		6,740 Front, 7,840 Rear
Outrigger	Extension type	mm	By hydraulic Cylinder, wire
	Shape		H-X Type
			Special
Valve control	Type		By lever (in emergency)
	Remocon		wired, wireless
			Special

Note : The above specifications are bound to change without prior notification for better operator's safety and due to changes in truck specifications.

## WORK AREA DIAGRAM





# Demolition and Rescue Fire-Fighting Vehicle JWF210A



## Main Functionalities Testing (Certified & Approved)



Demolition of Container



Penetration of Steel plate



Demolition of Concrete wall



Direct Water Jet



Water spraying



Foam spraying



Fire Suppression



Safety of Operation



# JWF210A

## DEMOLITION AND RESCUE FIRE-FIGHTING VEHICLE

- Firefighter personnel safety is enhanced through Wireless Remote Controlled(WRC) operations allowing mobility and rapid reaction to ground situations.
- Enhances safety from collapse or explosion risk when fighting highly combustible zones in larger SEZs, buildings or distribution warehouses
- Delivers highly efficient and rapid fire suppression by penetrating the roof and wall of various types of buildings(excluding Thick Concrete-mixed walls).
- Provision for different types of Electrical and Hydraulic attachments allows rapid, clearing of Debris including vehicles as well versatile rescue works.
- Faster response to reach complex narrow fire originated spot.

### Special Features



Tri-Axial Articulated  
Boom movement



Auxiliary Emergency Engine



Automatic Self-defense  
Spray system



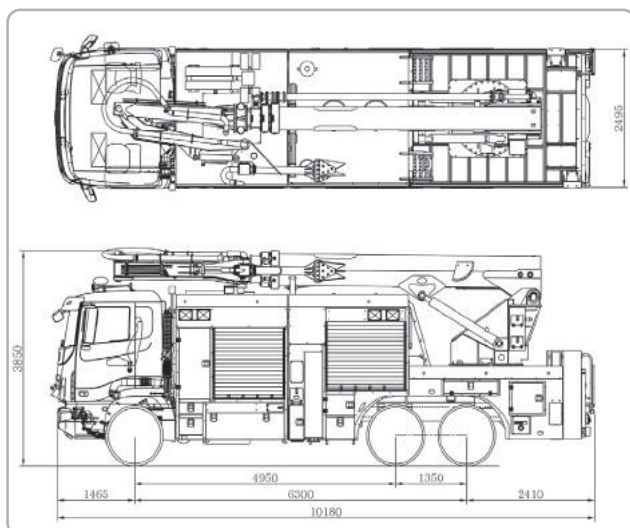
Compressed Air Foam System  
(On Request)

### SPECIFICATION

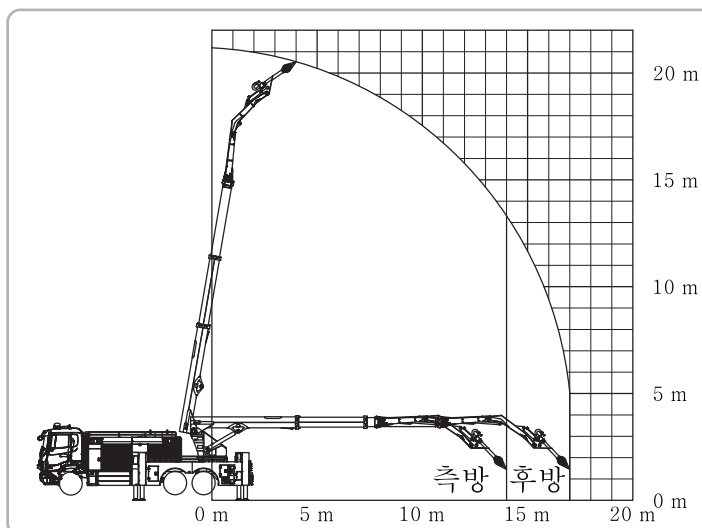
JWF 210ASPECIFICATION	
Overall Length / Height / Width	10,180 / 3,850 / 2,495 mm
Overall Weight (Configuration/GVW)	26,1400 Kg (6x4 / 28,100 Kg)
Water Spraying Demolisher Reach	21 m
Water Spraying Reach (Nozzle / Jet)	25.5 m / 80 m
Piercing Nozzle flow rate	4,500 l/min
Power of demolition	Steel Plate(4 mm), Concrete(160 mm)
Fire Pump	5,300 l/min
Water tank	2,000 l
Foam tank (If CAFS provided)	400 l
Outrigger	H - H Type (Single Push Auto leveling)
Extended width of Outrigger	5,200 mm ( Extended 7,500 )
Main Boom	Max. Angle 80 ° (Auto-stop)
Articulating Boom rotation	110 ° (Left / Right)
Turn-table rotation	Continuous
Lifting capacity	Rear(1Ton) / Side(0.5Ton) / Closed condition(1.5Ton)
Control Systems	Hydraulic, Mechatronic(using Wireless Remote Control) Auxiliary Engine. Automatic Stowage(One-Push button)
CAF System	Available (Optional)
Direct Water Spraying (Jet~Nozzle)	Automatic switching

Note : The above specifications are bound to change without prior notification for better operator's safety and due to changes in truck specifications.

### PRODUCT ASSEMBLY DRAWING



### WORK AREA DIAGRAM





# Compact Boom Fire-Fighting Vehicle (5 ton) JWF200PLS

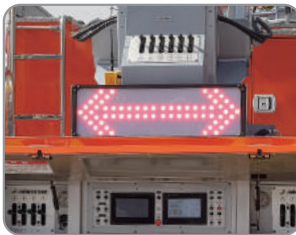


## Key Features of Rescue Platform

- 360° rotation Rescue Platform (patented)
- Excellent workability and approach to, blind spots (narrow alley, corner area)
- 360° rotation allows access to all sides and corners of the building
- Excellent installation for flexible operations and easier approach enhancing time efficiency.
- Maximized working approach by rotating the rescue platform 360°
- One-push button for automatic stowage of all operations to allow Firefighters more time for rescue operations.
- Failure proof, minimized down time and maintenance with availability of 3 back-up type operation systems.



Automatic Water-Turret attached



Rear Warning Lights(LED)



Double cabin



Side working



Rear working



Automatic level status LED display



Auxiliary Emergency Engine



Special Sandwich PTO



Automatic water turret operations (Spray / Jet)

# JWF200PLS

## COMPACT BOOM FIRE-FIGHTING VEHICLE (5 TON)

- Multipurpose compact Firefighter with maximum capacity of Water and Foam tanks
- Rapid approach to narrow roads in the city center and excellent maneuverability enable simultaneous ; fire suppression and rescue operations.
- Increased initial fire suppression capability through double supply and large capacity water tank
- Enhanced safety by deploying automatic stowage type platform, automatically self-leveling, and easier access into securedly spacious Rescue Platform.
- Automatic warning Light in Rescue Platform visually indicates and warns of self-leveling status of the platform.
- Foldable type Rescue Platform allows easier driving as well smoother 360° (limited) rotation function to improve rescue efficiency.
- Rescue Platform rated Capacity: 400Kg.

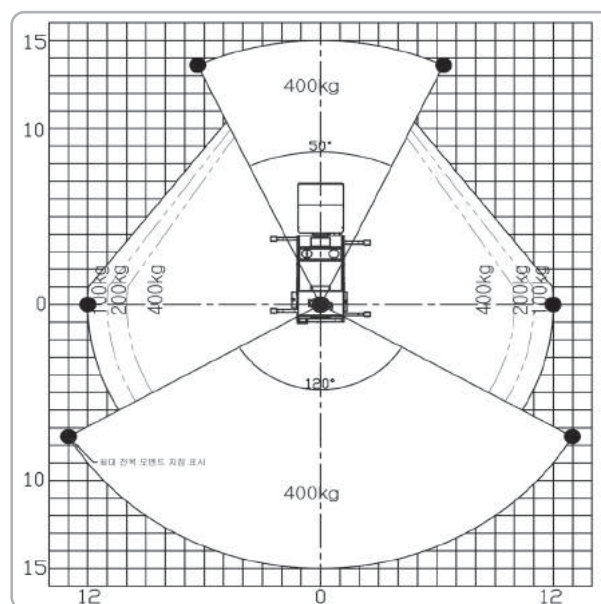


### SPECIFICATION

JWF200PLS SPECIFICATION	
Overall Length / Height / Width	8,000 / 3,650 / 2,480 mm
Overall Weight (Configuration/GVW)	8,050 Kg (4x2 / 8,200 Kg)
Rescue Platform capacity	400 Kg
Working Height	19 m
Working radius (max.)	15 m
Water tank	2,000 ℓ
Foam tank	100 ℓ
Automatic Water Turret	2,650 l/min (Spray <=> Jet Auto change)
Rescue Platform (D×W×H)	620×1,670×1,000 mm
Boom	Interlock 3-step Telescopic(Chains connected)
Turn table rotation	360 ° Continuous (Max. 720deg.)
Outrigger	H-H Type (Auto leveling option)
Extended width of outrigger	5,100 mm (different positioning)
Rescue Platform Control System	Electronic as well Portable Wireless Remote Control

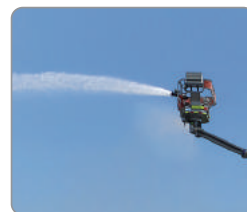
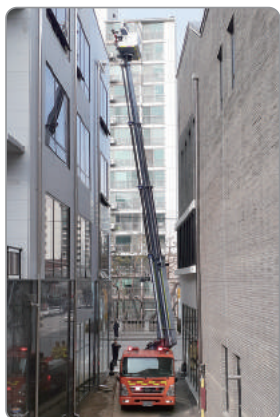
Note : The above specifications are bound to change without prior notification for better operator's safety and due to changes in truck specifications.

### WORK AREA DIAGRAM

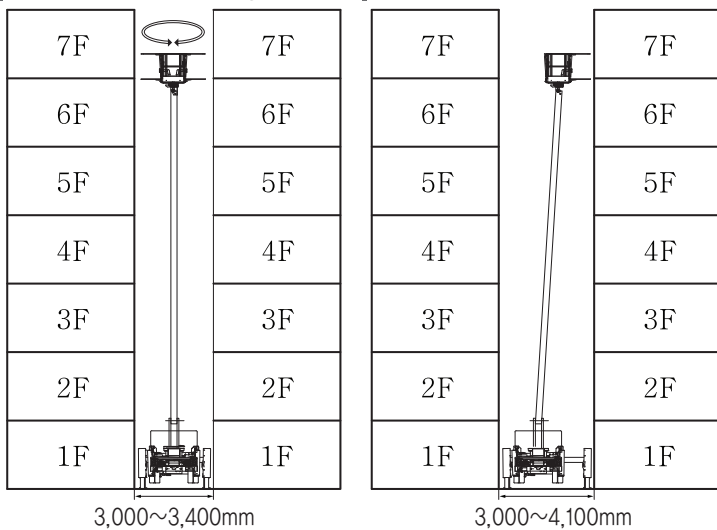




Compact Boom Fire-Fighting Vehicle (3.5 ton)  
**JWF200LS**



Rescue Platform 360 deg. Rotation



# JWF200LS

## COMPACT BOOM FIRE-FIGHTING VEHICLE (3.5 TON)

- 360deg. Continuous rotation of Rescue Platform for easier maneuvering and positioning of Rescue platform for faster efficient life saving.
- Rescue Platform located at the rear allows faster rescue operations in constrained space.
- Maximum outreach is possible by avoiding obstacles at height as Rescue Platform can move upwards in narrow space

### Safety Key Features



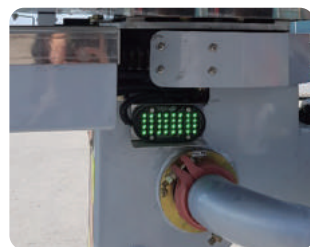
Emergency Auxiliary Engine



Rotation and Encoder detection



Over-tilt prevention sensor and Safety Check-Valve



Automatic Leveling Visual Indicator



Automatic Self-defense Spray system



Rescue Platform Control Unit



Outrigger level Warning Indicator



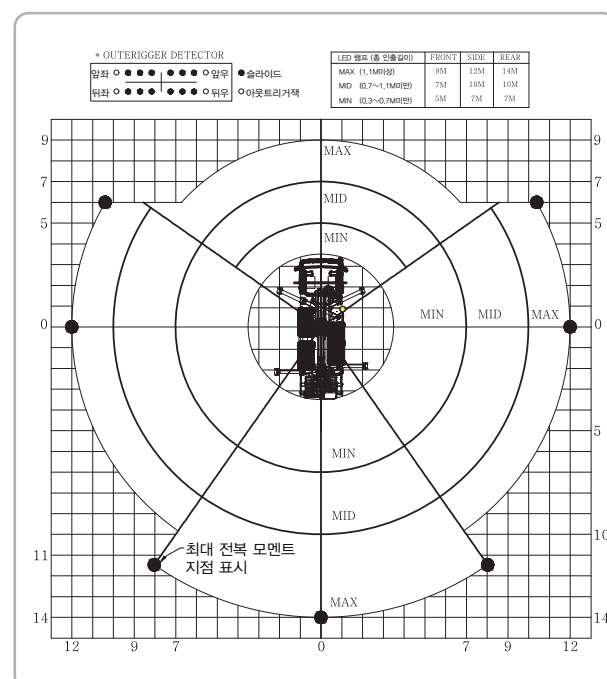
Master Central Control System

### SPECIFICATION

JWF200LS SPECIFICATION	
Overall Length / Height / Width	6,745 / 3,240 / 2,220 mm
Overall Weight (Configuration/GVW)	8,050 Kg (4x2 / 8,200 Kg)
Rescue Platform payload capacity	400 Kg
Rescue Reach Height	18 m
Automatic Water Turret	2,650 l/min (Spray <=> Jet Auto change)
Rescue Platform (D×W×H)	1,070×1,560×1,100 mm
Rescue Platform rotation	360 ° (Limited)
Boom	Interlock 4-step Telescopic (Chains connected)
Turn-Table rotation	360 ° Continuous (Max. 720deg.)
Outrigger	X-H Type (Auto leveling option)
Extended width of Outrigger	4,450 mm (different positioning)
Rescue Platform Control System	Electronic as well Portable Wireless Remote Control

Note : The above specifications are bound to change without prior notification for better operator's safety and due to changes in truck specifications.

### WORK AREA DIAGRAM

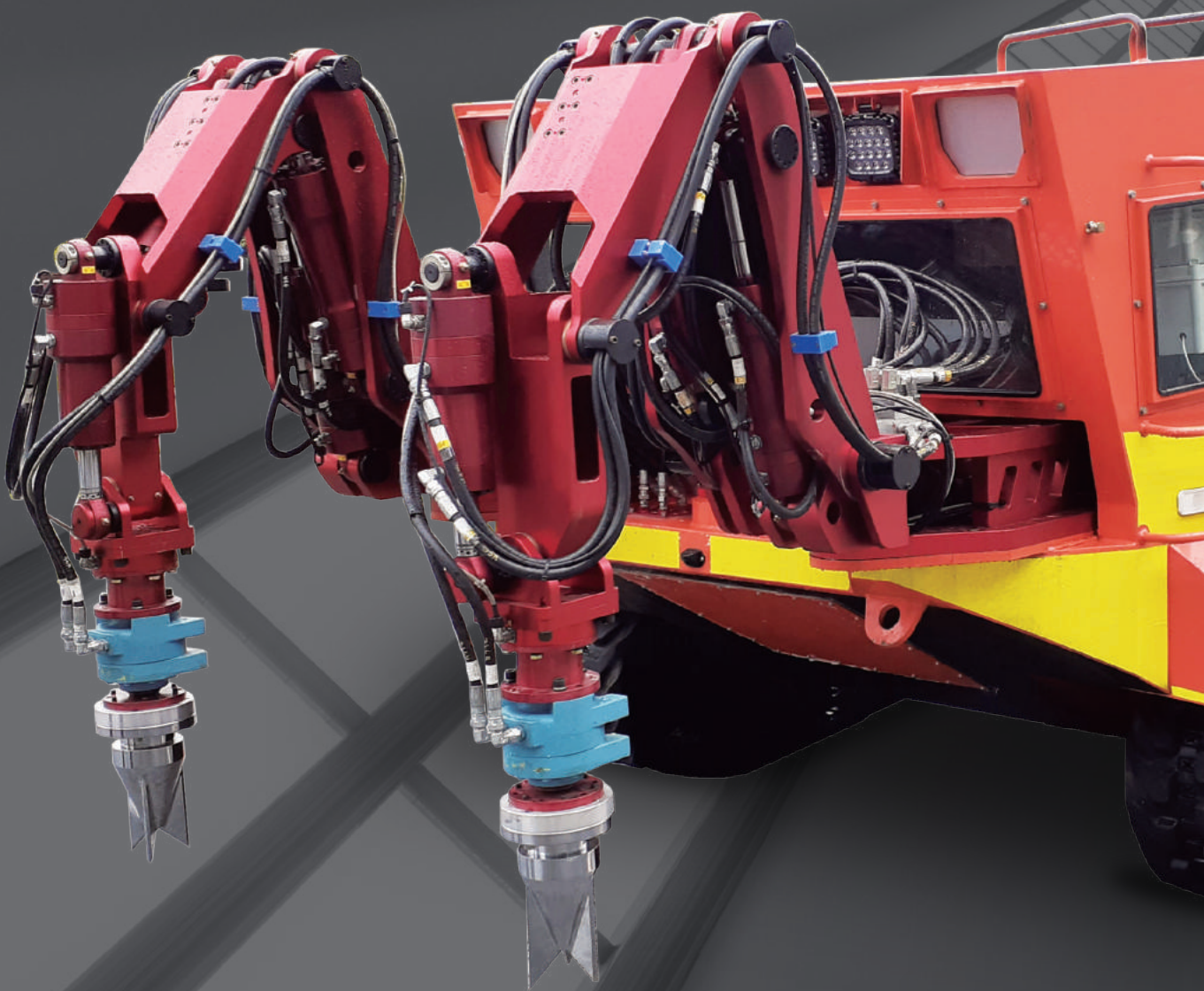




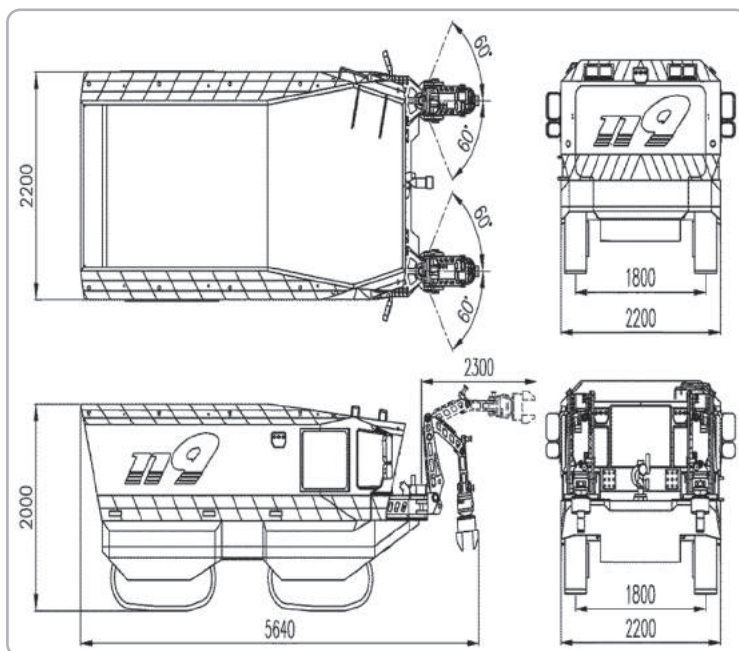
# JWF021EAR

## ELECTRICALLY DRIVEN ARMORED ROBOT FIRE TRUCK (6 TON)

In the event of a large-scale disaster taking place in large building or industrial plant facility such as hazardous gas leakage, structure collapse, explosion, etc.; fire extinguishing and rescuing are possible in situations where firefighting personnel approach is impossible. This Electric Armored Robot Firefighter is equipped with a robotic arm which can demolish the obstructions and pass through the debris, especially in disaster sites during catastrophic events such as Earthquake, Typhoon, Tsunami, Building collapse etc.



## PRODUCT ASSEMBLY DRAWING



## SPECIFICATION

JWF021EAR SPECIFICATION	
Overall Length / Height / Width	5,640 / 2,000 / 2,000 mm
Max. Occupancy	4 personnel
In-cab air purifying capacity	5 m <sup>3</sup> /min
Max speed in non-slope pathways	10 km/h
Max. Climbing Angle	35 / 10 °
Safe Climbing Height	0.5 m
Turning radius	360 ° (Central)
Operating hour	1 hour
Thermal Resistance	500 °C
Extinguish Capacity	900 l/min
Robotic Arm shock grade	39.5 grade
Robotic Arm gravity	500 Kg·f
Performance parameters	3-Axis versatile multiple hydraulics Attachments (5 types)

Note : The above specifications are bound to change without prior notification for better operator's safety and due to changes in truck specifications.



Rescue operation provided with Ambulance bed.



Positive Pressure Equipment.



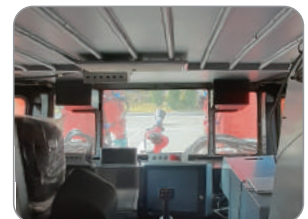
Rescue Patient bed



Automatic Water cannot and rescue attachments



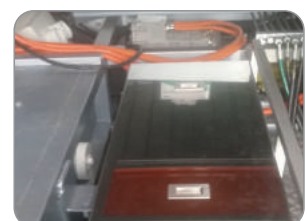
Direct Water Spray or Jet Nozzle auto switching



Control Cockpit



High density smoke visibility



Electric Battery



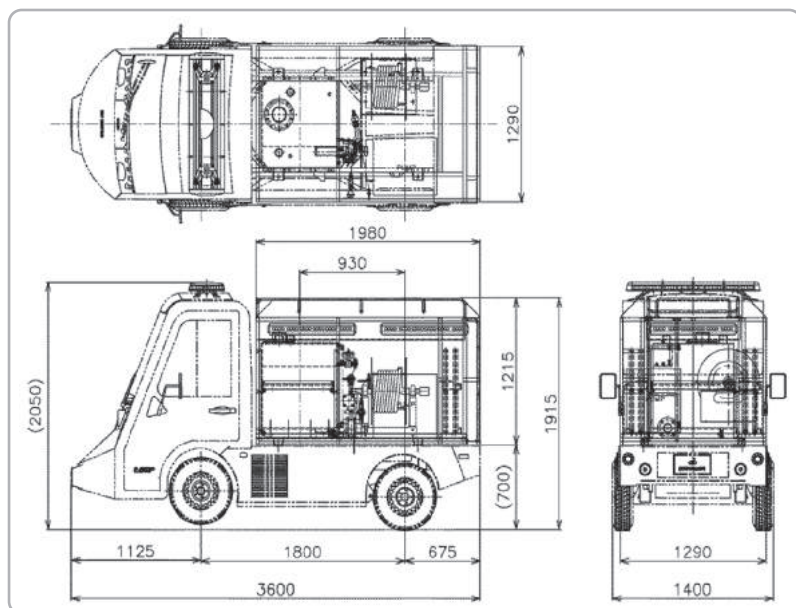
# JWF013ECL



## MINIATURE ELECTRIC-DRIVEN FIRE ENGINE (0.8 TON)

- Equipped with special module for fire suppression
- Fire hose automatic type reel device installed in sliding-type shelf structure.
- Vehicle safety devices such as ABS, rear camera, power steering, airbag, etc. provided.
- Electronic shifting option provided.
- High-strength/ultra-light base frame provided to strengthen robustness of the product.

### PRODUCT ASSEMBLY DRAWING



### SPECIFICATION

JWF021EAR SPECIFICATION	
Overall Length/Height/Width	3,600 / 1,915 / 1,400 mm
Max occupancy	2 persons
Max Speed	80 Km/h
Climbing ability	25 %
Charging time to full SOC	6 ~ 8 hour
Battery capacity	13 kwh
Motor Output	15 kw
Suspension type	Wishbone / Torsion beam
Water tank / Foam tank	302.9 / 20.5L
Firefighting pump flow rate	650 @ 0.5 ℓ/min @MPa 400 @ 0.7 ℓ/min @MPa
Firefighting pump output	8.6

Note : The above specifications are bound to change without prior notification for better operator's safety and due to changes in truck specifications.





## VARIOUS WORKING FIELDS





# AML SYSTEM



WARNING LAMP



BOOM'S ANGLE SENSOR



RECEIVER OF REMOTE CONTROLLER



MAIN CONTROL PANEL BOX



BOOM'S LENGTH SENSOR



BOOM OUTRIGGER INTERLOCK SENSOR



AML CONTROL BOX



PLATFORM'S LOADING CAPACITY IS 400KG INCLUDING 3 PERSONS



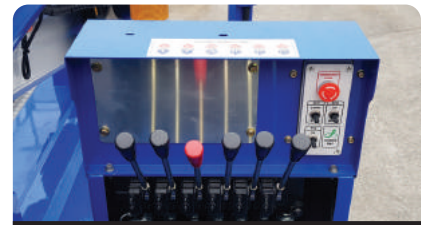
OUTRIGGER POSITION INDICATOR



OUTRIGGER LENGTH INDICATOR



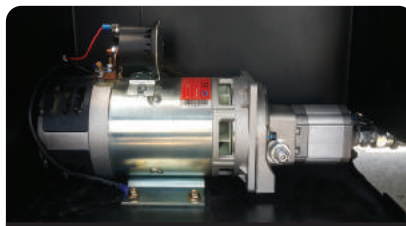
TOUCH-SCREEN DISPLAY COLOR MONITOR



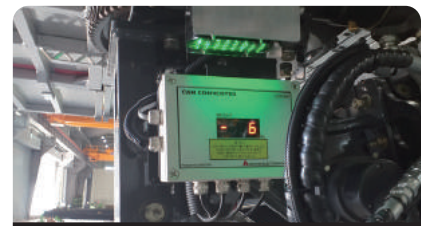
EMERGENCY STOP/ENGINE START / RPM / PTO SWITCHES



HYDRAULIC OIL COOLER



DC EMERGENCY PUMP



PAYLOAD LIMITER SENSOR



220V A/C POWER SOCKET PLATFORM



GROUND STATION CONTROL WITH OPERATOR SEAT



TURRET/BOOM ROTATION SENSOR



# EXPORTED ONLY MACHINE & MOUNTED ON LOCAL TRUCK

## Machine only



## Machine Delivery



## Local Mounting



## At client site after mounting



 JINWOO SMC CO., LTD.