

You Tube



Business
Manager



Executive
Director

JINWOO SMC CO., LTD.

Head Office / Gimje plant

Address : #20, Baekgu Gongdan 1 Gil,
Baekgu-Myeon, Gimje City, Jeollabuk Province, R.O.K
Tel. +82-63-770-7277 Fax. +82-63-770-7276
Web-site : www.jinwoosmc.com
E-mail : jinwoosmc1@jinwoosmc.com
jinwoosmc4@jinwoosmc.com

Iksan Plant

Address : #353, Sugam-Ro, Chunpo-Myeon,
Iksan-City, Jeollabuk Province, R.O.K
Tel. +82-63-838-2529 Fax. +82-63-838-2527

Gyeong-gi Branch (Seoul Business Center)

Address : #836-5, Balan-Ro, Yanggam-Myeon,
Hwasung City, Gyeonggi Province, R.O.K
Tel. +82-31-352-2529 Fax. +82-31-354-2529

Web-site : www.jinwoosmc.com

E-mail : jinwoosmc1@jinwoosmc.com
jinwoosmc4@jinwoosmc.com



INTRODUCTION TO PRODUCTS CATALOGUE

As a Global Enterprise
JINWOOSMC is spreading
throughout the world





As a Global Enterprise JINWOOSMC is spreading throughout the world!

Established in 1992 as a Special Machineries company, we started to mass produce “Elevating Work Platforms” from 1998 as the country was focusing on reconstruction due to IMF crisis. Due to expansion in our products range, we established limited company “JINWOO SMC Co., Ltd.” in 2007. We started to produce various kinds of multi-purpose special machineries according to the technological trends in domestic as well as international markets.

Due to advancement of innovative high-end technologies in Korea, huge overseas demands for Korean products exist all-around the world. We started export in 2008 to Iraq ; followed by Middle-East, Asia in 2009 & mainly Canada, Philippines and Singapore in 2010. Thereafter ; to Iraq, Bangladesh, Iran, UAE, Vanuatu, Saudi Arabia, China, India since 2011. Then expanded export to Malaysia, Russia, Ghana in 2012 ; Peru, Indonesia, Vietnam in 2013 ; Kuwait, Uzbekistan, Turkmenistan in 2014 ; Thailand, Sri Lanka, Qatar in 2015, and since then we have been exporting to these countries for the repeated orders in 2016~2023.

Especially, we developed Demolition and Rescue Fire-fighting vehicle for first time in Korea in 2015, since then 19 units are delivered by successful bid to the Korean government–“Ministry of Public Safety and Security” as well “National 119 Rescue Headquarters”. Hence, we set-up mass production, special design and testing centers in newly established Head-office in 2020.



MANAGEMENT HISTORY

- 2004 : Nominated as the promising upcoming Medium and Small Enterprise by Korean Government
- 2005 : Establishment of exclusive Research and Development center
- 2006 : Nominated as a Venture Business by Korean Government
Approved as the Technology Innovation mode of Enterprise (INNO-BIZ) by Korean Government
Grant of ISO 9001 : 2000 certification
Issue of ISO 14001 : 2004 – Safety and Cleanliness recognition from Quality Management System for Environmental Safety certification
- 2007 : Jinwoo SMC Co. Ltd. was established with Jinwoo Machinery as its subsidiary.
- 2009 : Grant of ISO 9001 : 2008 certification
Approval Certification by Korea Food and Drug Administration for Super Specialty Ergonomic Medical Bed ~ Govt.
Sponsored Health Care Project Export of Aerial Work Platforms to Middle-East worth more than 1.5 Million USD
Nominated as Reliable and Promising Export SME by Govt. Authority
- 2010 : Innovation of World's First Self-Propelled Bridge Maintenance Unit for Singapore Govt.
Approval of ANSI 92.2 – 2009 Certification for our Canada Exported Model
- 2011 : Awarded One Million Dollar's Export Volume Performance by Korea Int'l Trade Association.
- 2012 : Extension of ISO 9001 : 2008 and ISO 14001 : 2004
Approval of GOST Certification for our Russian Exported Model
Passed Certificate of ANSI 92.2 ~ 2009.
Grant of Clean Workplace Certification
- 2015 : Approval of CE Certificate for our European Exported Models
- 2016 : Produced and delivered 4 units of "Demolition and Rescue Fire-Suppression Fighter Water Cannon" to Korean government.
- 2017 : Nominated as G-PASS company. Designated an excellent company for invention & production of DRFF.
- 2018 : Approval of CU Gost certificate for exporting to CIS countries.
Received Excellence Award from prime minister for firefighting vehicle.
- 2020 : Succeeded to obtain KFI (Korea Fire Institute) Certification for Compact 20m Boom Firefighter (3.5 ton). Acquired Excellent Performance Certification (EPC) for compact 20m Boom Firefighter (3.5 ton).
Succeeded to obtain KFI (Korea Fire Institute) Certification for Compact 20m Boom Firefighter (5 ton) with Water-Tank
- 2021 : Acquired EPC (Performance Authentication) for 5 ton Firefighting Vehicle
- 2022 : Received Award Certificate of Ministry of Employment & Labor

DESIGN ACHIEVEMENT HISTORY

- 1992 : Automatic Control Systems for Industrial machineries
- 1998 : Establishment of Jinwoo Machinery Corporation
- 1999 : Design and Production of 8m, 12m and 14.5m Telescopic and Z-link Type MEWP
- 2000 : Design and Production of 18m Telescopic Aerial Work Platform
- 2001 : Design, Development and Production of 21m telescopic type
- 2002 : Design and Development of 29m -first time with end-articulated Boom
- 2003 : 24m and 32m were designed successfully at first attempt
- 2004 : Design and Production of 48metres end-articulated type
- 2005 : Advanced, Design and production of Diplo320 and Diplo400
- 2006 : Release of Customized 49m with end-articulated Boom & 65m Telescopic Boom
- 2007 : Advanced Design of 45m Rear type, 67m – Highest range product
- 2008 : Release of Special vehicles for Health care ~ Korean Govt.
Projects Highest range of 75m is developed and released in local market achieving 70% share
- 2009 : Joint-Development of Fully Integrated Universal Mechatronic Control System.
- 2010 : Design of world's first ever compact, light-weight, self-propelled Bridge Maintenance special machinery for, and approved, by Singapore govt.
- 2011 : Special design of 32m Jib Boom type Mobile Elevating Work Platform for Canadian customer for his local American vehicle which passed ANSI 92.2 – 2009 Certification
- 2012 : Developed and Produced Ladder Lift Truck (25m)
- 2013 : Development and release of Mini Breaker (1ton)
- 2014 : Development of World's highest 35m(3.5tons) Sky Lander (Highlander), Compact Mini Breaker (2ton), Mobile kitchen truck, 45m (Articulating), 45m(new design)
- 2015 : Developed Demolition and Rescue Fire-Suppression Fighter Water Cannon, Vehicle Wireless Remote controlled-Korean type.
Developed all chain type (28m, 32m, 45m) and acquired CE certificate.
- 2017 : Developed PHEV Garbage Truck
- 2018 : Developed all chain type (290CW, 300C, 300A/insulating, 320C, 380CW, 450CW, 450S, 580C) models.
- 2019 : Developed and tested compact light-weight 20m Boom Firefighter (3.5 ton). Developed 52m (Jinwoo540) Working Height all-chain model, for sophisticated works
- 2020 : Developed and tested compact 20m Boom Firefighter (5 ton) with Water-Tank.
- 2021 : Developed 46m(Jinwoo 460L), 29m and 32m working height with auto transmission vehicle.
- 2022 : Developed Aerial Work Platform (JW330HS, JW400S, JW460S).
- 2023 : Developed Firefighting Vehicle (JWF K320LS).



JW750

AERIAL ELEVATING WORK PLATFORM

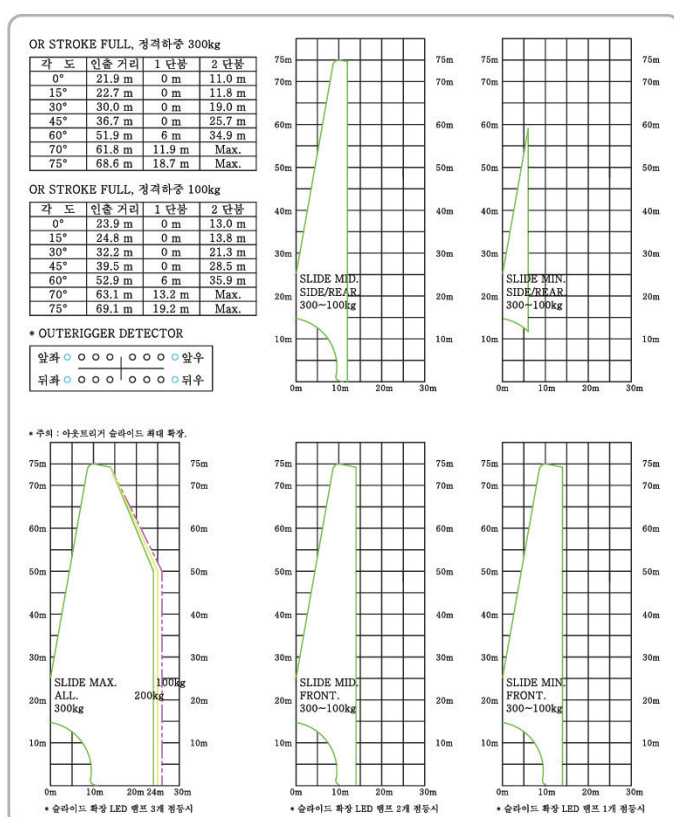


JW750 AERIAL ELEVATING WORK PLATFORM

BOOM EXTENSION BY ALL CHAIN TYPE

- Dual stage Auto-program controlled 10 Telescopic Booms for cadence movements and failure-proof enhanced safety.
- Domex700 Special treated corrosion resistant steel for Booms to minimize drooping/moment.
- All Booms extend and retract by All-Chain mechanism for longevity and almost nil maintenance

WORK AREA DIAGRAM



SPECIFICATION

JINWOO750 SPECIFICATION				
Contents		Unit	Data	Remarks
Permissible Mounting Vehicle		Ton	Min. 34 GVW	8x4
Max. Working Load	Payload	kg	300	Including 3 persons
	Length	mm	12,990	Transport dimension
	Height	mm	3,990	
Product's Dimension (with Vehicle)	Width	mm	2,495	
	Max. Height	m	75	Including Operator height
Working Area		Max. Outreach	m/kg	24 - 300 / 28 - 100
Work Platform	Dimension	mm	1,830 * 500 * 300	Basic
			3,230 * 1,030 * 1,100	Extended
	Rotation Angle	deg.	360 continuous	±720
Boom	Type		Octagonal	8 edges
	Number of Booms		10	Telescopic
	Extension		By hydraulic Cylinder & Chain	Dual stage
Slewing Rotation	Type		By hydraulic Cylinder & Chain	Minimal backlash
	Rotation Angle	deg.	360 continuous	±720
Hydraulic Pump Drive Type		Engine	P.T.O	Minimal backlash
Outrigger	Width	mm	Front : 8,000 ; Rear : 8,045	Different positioning
	Extension		Hydraulic Cylinders, Wire	
	Type		X - A	Patented
Valve control	Type		By lever	All controls
	Remote control		Wireless	Upper controls only

Note : The above specifications are bound to change without prior notification for better operators safety and due to changes in truck specifications.



JW620J

AERIAL ELEVATING WORK PLATFORM



JW620J AERIAL ELEVATING WORK PLATFORM

HIGHER REACH HEIGHT OPTIMIZED WITH JIB-BOOM FOR FLEXIBLE APPROACH

- Provided with specialized flexible 120deg. Jib-Boom to reach intricate working area.
- All-Chain type dual-stage Boom for enhanced safety and longevity with nil maintenance and minimal drooping moment.
- Cushion-like special patented X-A style wide reach Outrigger system with auto-programmed position-based versatile work approach area for work platform.

WORK AREA DIAGRAM

JINWOO620J WORK AREA DIAGRAM

WEIGHT	400KG
COLOR	300KG
CODE	200KG
	100KG

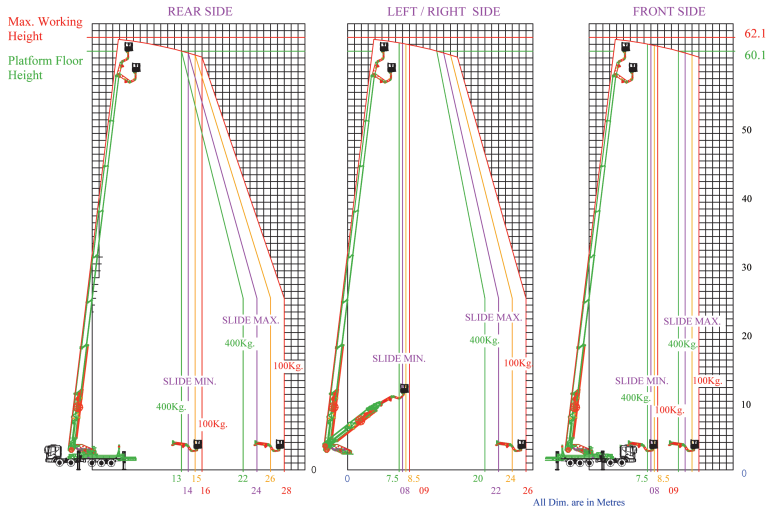
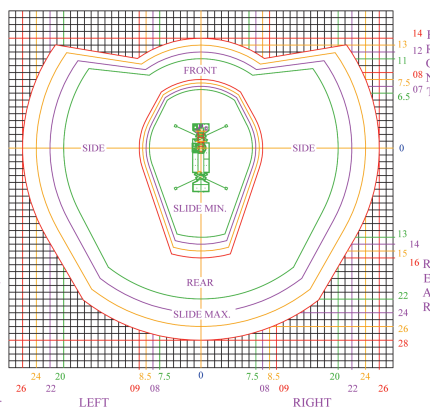
OR LED INDICATOR	FRONT	SIDE	REAR
MAX. (>2.2M)	14M	26M	28M
MID. (1.25 ~ 2.2M)	11M	14M	22M
MIN. (0.3 ~ 1.25M)	08M	09M	16M

* Work Area is dependent on Outrigger Positioning and automatically varies between Min. and Max. positioning.

* If Outrigger is not extended, Max. Boom extension is restricted automatically.

* NOT SUITABLE TO WORK WITH HIGH TENSION VOLTAGE LINES. Stay Min. 8meters away from HTV Lines.

* Specifications may change for safety and performance improvement.



SPECIFICATION

JINWOO620J SPECIFICATION			
Contents	Unit	Data	Remarks
Permissible Mounting Vehicle	Ton	Min. 32 GVW	Machine 20Tons
Max. Working Load	Payload	kg	400
Product's Dimension (with Vehicle)	Length	mm	13,650
	Height	mm	3,950
	Width	mm	2,490
Working Area	Max. Height	m	62.1
	Max. Outreach	m/kg	Rear : 22 - 400 / 28 - 100 Left/Right : 20 - 400 / 26 - 100 Front : 7 - 400 / 14 - 100
Work Platform	Dimension (L x D x H)	mm	1,830 * 500 * 1,100
			3,230 * 1,030 * 1,100
	Rotation Angle	deg.	360deg. Continuous
Boom	Type		Telescopic Octagonal, Articulating/Jib-Boom Rectangle
	Number of Booms		Telescopic 8, Articulating/Jib-Boom 1
	Extension		Hydraulic Cylinders, Chain
Turntable Rotation	Type		Slewing Bearing with Hydraulic Reduction Gears
	Rotation Angle	deg.	350 (±175)
Hydraulic Pump Drive Type	Engine		P.T.O
Outrigger	Width	mm	Front/Rear : 9,600 Left/Right : 8,050
	Extension		Hydraulic Cylinders, Wires
	Type		X-A
Operations and Controls	Type		Hydraulic Levers
	Remote control		Portable Radio Wireless

Note : The above specifications are bound to change without prior notification for better operators safety and due to changes in truck specifications.



JW540M

AERIAL ELEVATING WORK PLATFORM



1,374mm



3,800mm

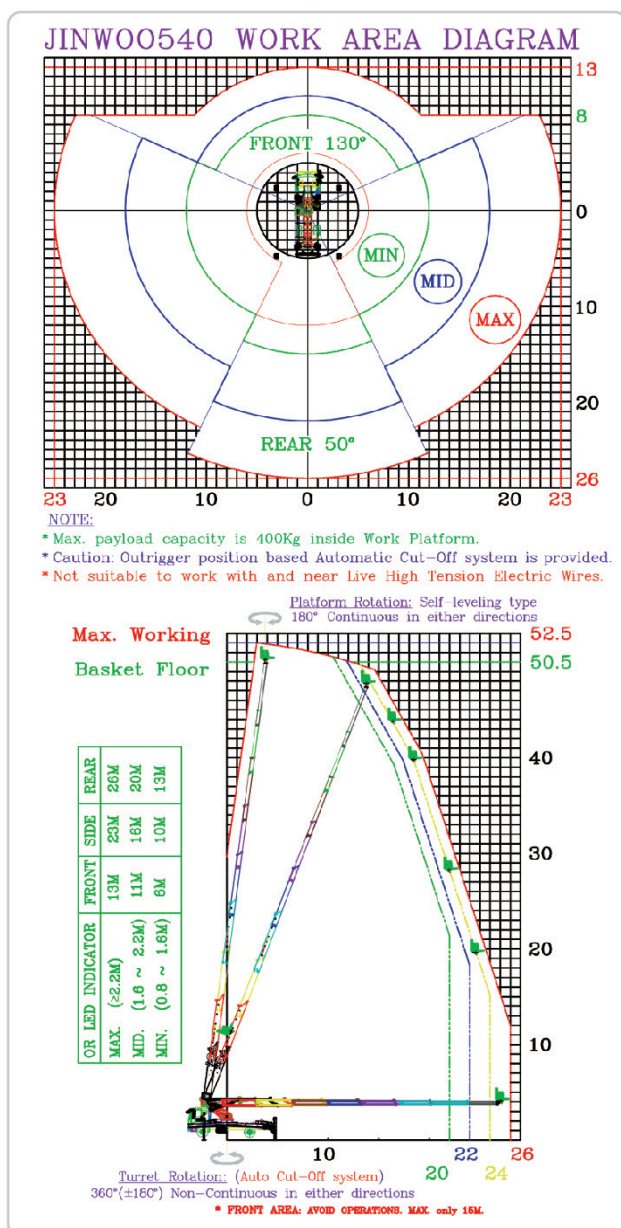


JW540M AERIAL ELEVATING WORK PLATFORM

OPTIMIZED FOR THE NARROW & CONSTRAINED SPACE

- Short span Outrigger extension(1.4m) and compact transport dimension.
- Minimal Boom's bending as its produced from high-tensile special treated steel.
- All-chain type Boom operations for enhanced safety & minimal drooping.
- 2-stage Boom extension with program-controlled dual Extension cylinders.
- Minimized moment with enhanced 9-stage cadence Hexadecagon Booms (16 edges).

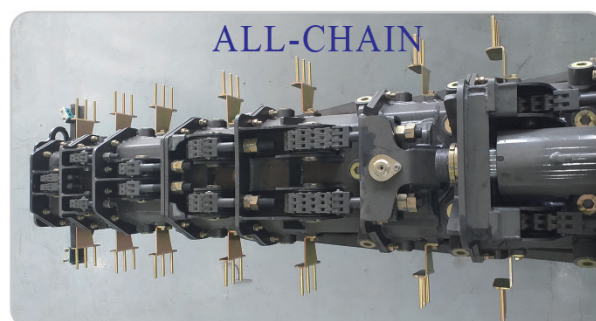
WORK AREA DIAGRAM



SPECIFICATION

JINWOO540M SPECIFICATION				
Contents		Unit	Data	Remarks
Permissible Mounting Vehicle		Ton	Min. 18.0 GVW	4x2
Max. Working Load	Payload	kg	400 (OPTIONAL 400Kgs Crane Winch)	Including 3 persons
	Length	mm	9,010	Transport dimension
	Height	mm	3,980	
	Width	mm	2,495	
Working Area	Max. Height	m	52	Operator height
	Max. Outreach	m/kg	Rear : 22 - 400 / 28 - 100 Left/Right : 19 - 400 / 25 - 100 Front : 12 - 400 / 15 - 100	Outrigger Max. extended
Work Platform	Dimension (L x D x H)	mm	1,830 * 500 * 1,100	Basic
			3,230 * 1,030 * 1,100	Extended
	Rotation Angle	deg.	360deg. Continuous	±720
Boom	Type		HexaDecagon	16 edges
	Number of Booms		9	Telescopic
	Extension		Hydraulic Cylinders, Chain	Dual stage
Slewing Rotation	Type		By Hydraulic Reduction Gears	Minimal backlash
	Rotation Angle	deg.	350 (±175)	Auto Cut-off
Hydraulic Pump Drive Type	Engine		P.T.O	Electric type
Outrigger	Width	mm	Front : 7,610 ; Rear : 6,630	Different positioning
	Extension		Hydraulic Cylinders, Wires	
	Type		X-A	Patented
Operations and Controls	Type		Manual Lever	All controls
	Remote control		Portable Radio Wireless	Upper controls only

Note : The above specifications are bound to change without prior notification for better operators safety and due to changes in truck specifications.



JW460L/JW490J

AERIAL ELEVATING WORK PLATFORM



500kg Platform

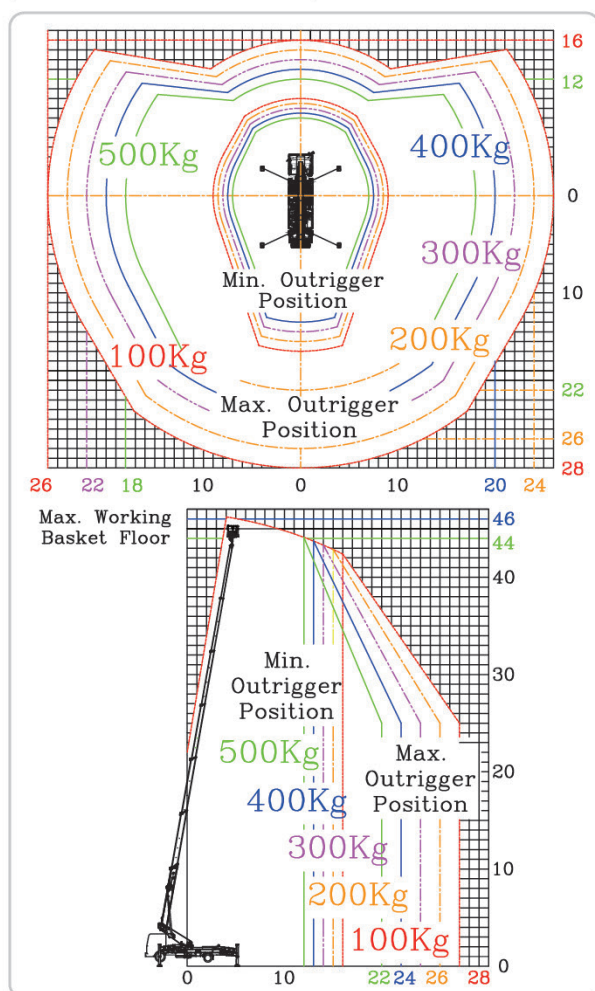


JW460L/JW490J AERIAL ELEVATING WORK PLATFORM

HIGHER LEVEL PRODUCT MOUNTED ON THE HIGH LOAD CHASSIS(5 TON)

- 490J provides flexible 120 degree Jib-Boom to approach complex work area.
- All-chain type Boom for enhanced safety; minimizing moment as well repairs with zero maintenance.
- High Tensile, special treated Steel for Boom (8 ~ 16 edges).
- Increased cushion-like effect with special patented X-A style Stabilizer (Outrigger) system.
- Special Heavy payload 500kg Aluminium Platform for higher efficiency & convenience.

WORK AREA DIAGRAM



SPECIFICATION

JINWOO460L / JINWOO490J SPECIFICATION					
Contents		Unit	Data		Remarks
Permissible Mounting Vehicle		Ton	JINWOO460L	JINWOO490J	4x2
			Min. 16.5 GVW	Min. 18.5 GVW	
Max. Working Load	Cargo	kg	500 (special design)	400	Including 2 persons
Product's Dimension (with Vehicle)	Length	mm	9,565	9,790	Transport dimension
	Height	mm	3,900	3,980	
	Width	mm	2,495	2,445	
Working Area	Max. Height	m	46	49	
	Max. Outreach	m/kg	22 - 500-28 - 100	20 - 400-26 - 100	
Crane Winch	On Request	kg	400	Not provided	
Work Platform	Dimension (L x D x H)	mm	1,830 * 500 *1,100		Basic
			3,230 * 1,030 *1,100		Extended
	Rotation Angle	deg.	360deg. Continuous		±720
Boom	Type		#1 to #3 Hexadecagon #4 to #7 Octagon		Special 16 & 8 edges
	Number of Booms		7	7 Telescopic +1 Jib	Telescopic Main
	Extension		Hydraulic Cylinders, Chains		
Slewing Rotation	Type		Slewing Bearing with Hydraulic Reduction Gears		Minimal backlash
	Rotation Angle	deg.	350 (±175)		Auto Cut-off Electric type
Hydraulic Pump Drive Type	Engine		P.T.O		
Outrigger	Width	mm	Front : 8,460 Rear : 8,165	Front : 8,410 Rear : 8,150	Program based Multiple positioning
	Extension		Hydraulic Cylinders, wires		
	Type		X-A		Patented
Operations and Controls	Type		Hydraulic Levers		All controls
	Remote control		Portable Radio Wireless		Upper controls only

Note : The above specifications are bound to change without prior notification for better operators safety and due to changes in truck specifications.



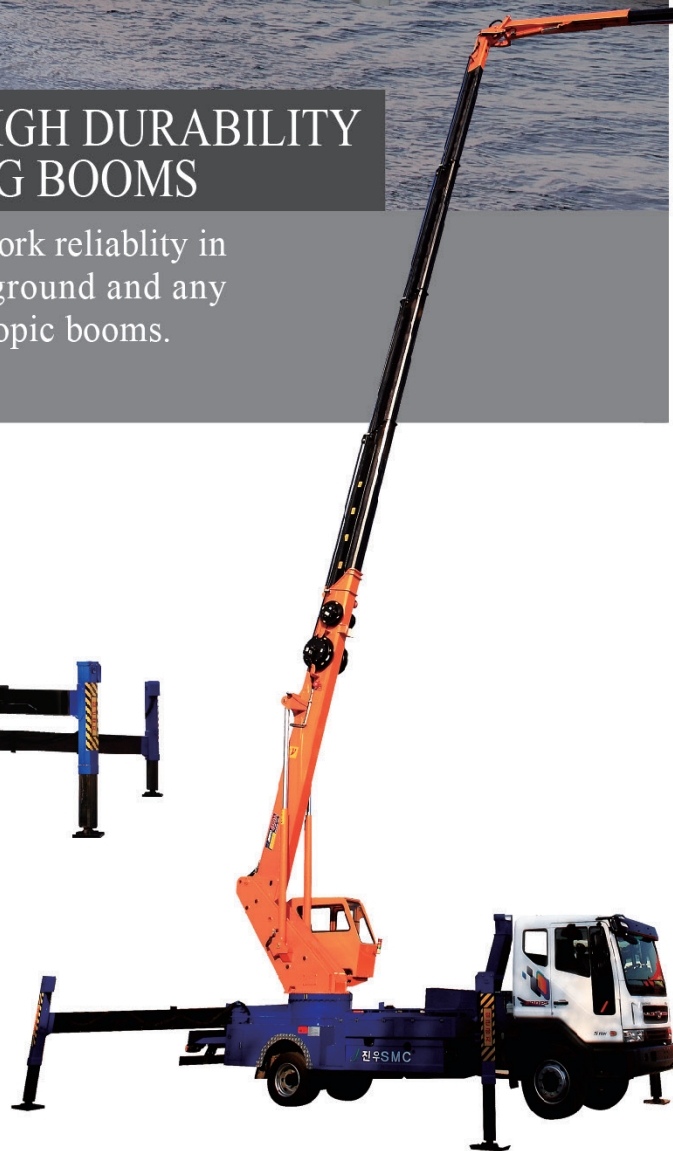
JW450A

AERIAL ELEVATING WORK PLATFORM



PROFESSIONAL EQUIPMENT WITH HIGH DURABILITY USING TELESCOPIC & ARTICULATING BOOMS

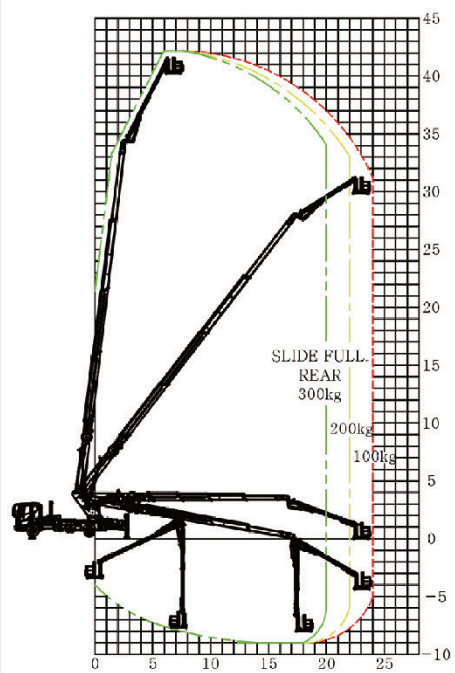
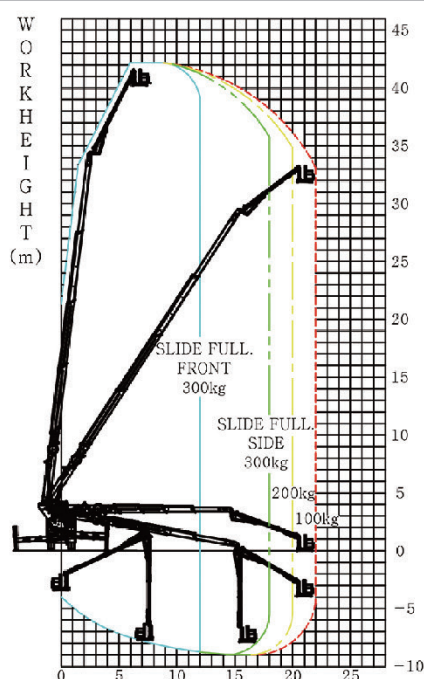
It is highly flexible and compact providing superior work reliability in complex work fields such as under bridges, below ground and any intricate work area requiring end articulating & telescopic booms.



JW450A AERIAL ELEVATING WORK PLATFORM



WORK AREA DIAGRAM

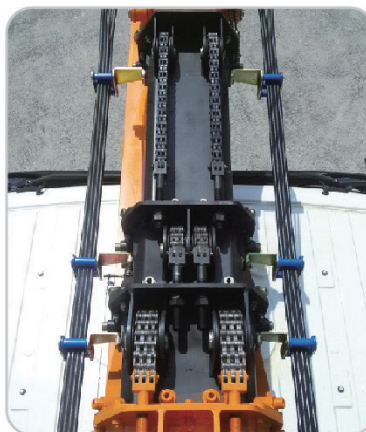


(3)SLIDE EXTENSION LED LAMP "ON"

SPECIFICATION

JINWOO450A SPECIFICATION			
Contents	Unit	Data	Remarks
Permissible Mounting Vehicle	Ton	Min. 16.5 GVW	4x2
Max. Working Load	Payload	Kg	300 (special design)
Product's Dimension (with Vehicle)	Length	mm	9,920
	Height	mm	3,955
	Width	mm	2,495
Working Area	Max. Height	m	42.5
	Max. Outreach	m/kg	Rear : 22 - 400 / 26 - 100 Left/Right : 18 - 300 / 22 - 100 Front : 10 - 400 / 15 - 100
Work Platform	Dimension (L x D x H)	mm	1,650 * 610 * 1,100
		mm	3,150 * 900 * 1,100
	Rotation Angle	deg.	360deg. Continuous
Boom	Type		Octagonal (Telescopic) Rectangular (Articulating)
	Number of Booms		5 (Telescopic) 2 (Articulating)
	Extension		Hydraulic Cylinders, Chains
Slewing Rotation	Type		Slewing Bearing with Hydraulic Reduction Gears
	Rotation Angle	deg.	350 (±175)
Hydraulic Pump Drive Type	Engine		P.T.O
	Width	mm	Front : 8,520 ; Rear : 8,115
Outrigger	Extension		Hydraulic Cylinder & Wire
	Type		X - A
Operations and Controls	Type		Hydraulic Levers
	Remote control		Portable Radio Wireless

Note : The above specifications are bound to change without prior notification for better operators safety and due to changes in truck specifications.



JW 400S

AERIAL ELEVATING WORK PLATFORM



1,220mm



500kg Platform

5,940mm

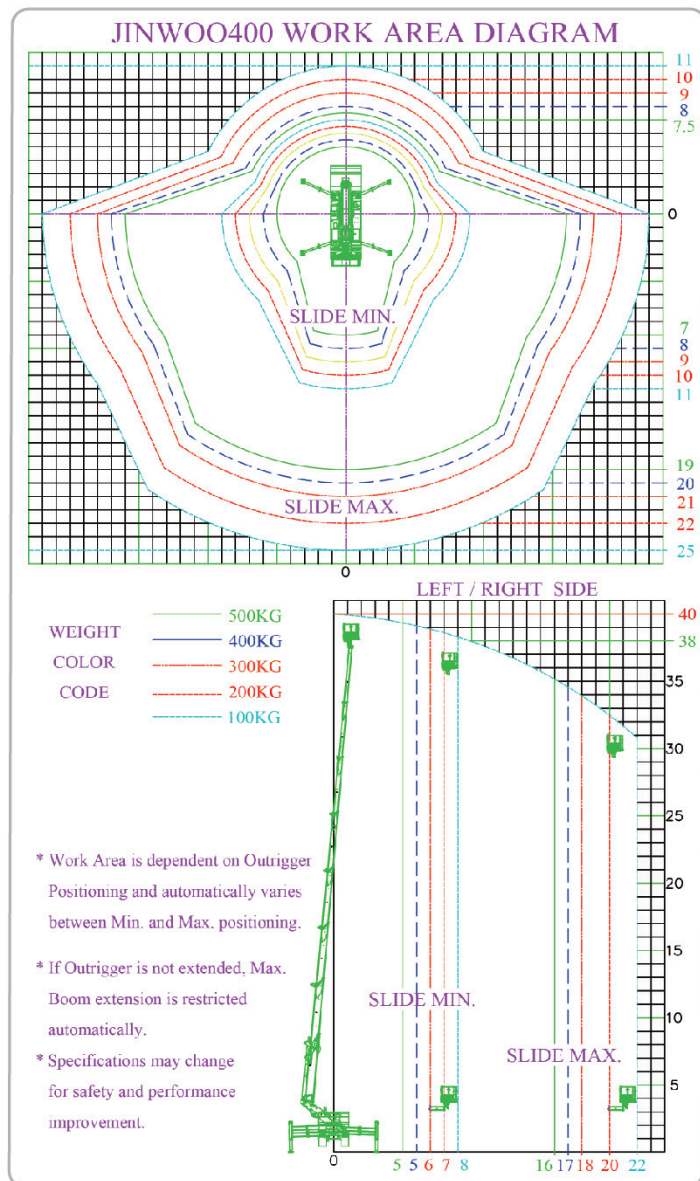


JW400S AERIAL ELEVATING WORK PLATFORM

THE HIGHEST SAFETY & ABILITY TO WORK WITH THE CHASSIS (CENTRAL AXIS)

- World's most compact (transportation) & light weight with 500kg payload capacity.
- All chain type Boom / High tensile special treated steel / 8 stages boom (18 edges)

WORK AREA DIAGRAM



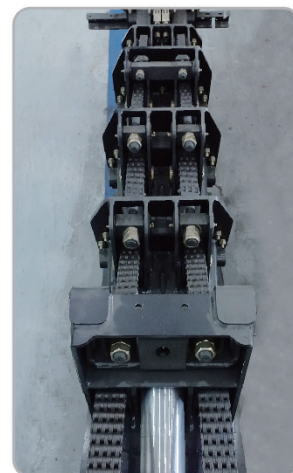
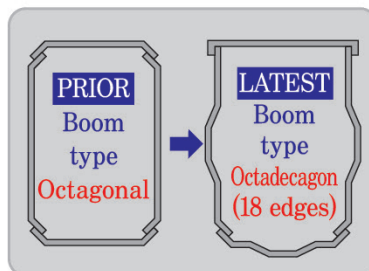
SPECIFICATION

JINWOO400S SPECIFICATION			
Contents	Unit	Data	Remarks
Mounting Truck	Ton	Min. 13.5 GVW	4x2
Max. Working Load	Cargo	kg	500 (special design)
Product's Dimension (with Vehicle)	Length	mm	7,510 (Compact for any roads)
	Height	mm	3,400
	Width	mm	2,205
Working Area	Max. Height	m	40
	Max. Outreach	m/kg	19/500 ~ 25/100
Crane Winch	On Request	kg	300
Work Platform	Dimension (L x D x H)		1,830 * 500 * 1,100
	Rotation Angle		360deg. Continuous
Boom	Type		OctaDecagon
	Number of Booms		8
Slewing Rotation	Extension		Hydraulic Cylinders, Chain
	Type		Slewing Bearing with Hydraulic Reduction Gears
Hydraulic Pump Drive Type	Rotation Angle	deg.	350 (±175)
	Engine		P.T.O
Outrigger	Width	mm	Front : 6,525 Rear : 6,525
	Extension		Hydraulic Cylinders, Wires
Operations and Controls	Type		X-A
	Remote control		Portable Radio Wireless

Note : The above specifications are bound to change without prior notification for better operators safety and due to changes in truck specifications.



Large size ring gear of turntable



JW320AH/JW330HS

AERIAL ELEVATING WORK PLATFORM

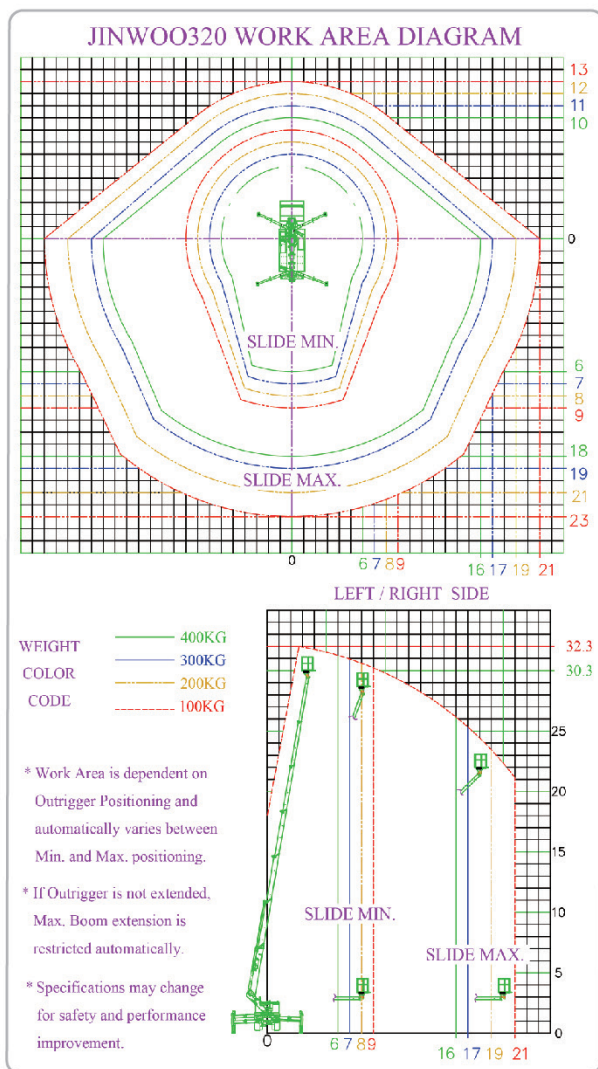


JW320AH/JW330HS AERIAL ELEVATING WORK PLATFORM

THE HIGHEST SAFETY & ABILITY TO WORK WITH THE CHASSIS (CENTRAL AXIS)

- All-chain type Boom for enhanced safety; minimizing moment as well repairs with zero maintenance.
- Increased stability with our patented X-A style Stabilizer (Outrigger) system.
- Option of Front Submerged A-type Stabilizer system for longer front area working.
- Compact sized, with least Boom protrusion(67cms) avoiding in-coming vehicles traffic accidents.
- Minimalized Platform moment with large size Ring Gear below Work Platform.

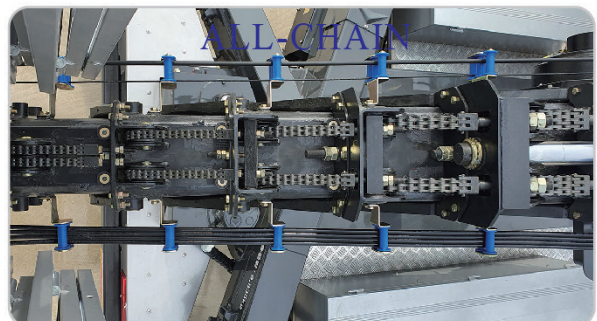
WORK AREA DIAGRAM



SPECIFICATION

JINWOO320AH / 330HS SPECIFICATION					
Contents		Unit	JINWOO320AH	JINWOO330HS	Remarks
Permissible Mounting Vehicle		Ton	Min. 9.0 GVW		4x2
Max. Working Load	Payload	Kg	400 (OPTIONAL 300Kgs Crane Winch)		Including 3 persons
Product's Dimension (with Vehicle)	Length	mm	6,785	7,100	Transport dimension
	Height	mm	3,070	3,110	
	Width	mm	2,150	2,360	
Working Area	Max. Height	m	32	32.6	Operator height
	Max. Outreach	m/kg	Rear : 18 - 400 / 23 - 100 Left/Right : 16 - 400 / 22 - 100 Front : 10 - 400 / 14 - 100		Outrigger Max. extended
Work Platform	Dimension (L x D x H)	mm	1,830 * 500 *1,100		Basic
			3,230 * 1,030 *1,100		Extended
	Rotation Angle	deg.	360deg. Continuous		Max. ±720
Boom	Type		HexaDecagon	OctaDecagon	16 edges
	Number of Booms		7	8	Telescopic
	Extension		Hydraulic Cylinders, Chains		Single stage
Slewing Rotation	Type		Slewing Bearing with Hydraulic Reduction Gears		Minimal backlash
	Rotation Angle	deg.	350 (±175)		Auto Cut-off
Hydraulic Pump Drive Type	Engine		P.T.O		Electric type
Outrigger	Width	mm	Front : 5,870 Rear : 6,035	Front : 5,670 Rear : 5,820	Position based Work Area approach
	Extension		Hydraulic Cylinder, Wire		
	Type		X - A		Patented
Operations and Controls	Type		Hydraulic Levers		All controls
	Remote control		Portable Radio Wireless		Upper controls only

Note : The above specifications are bound to change without prior notification for better operators safety and due to changes in truck specifications.



JW210R

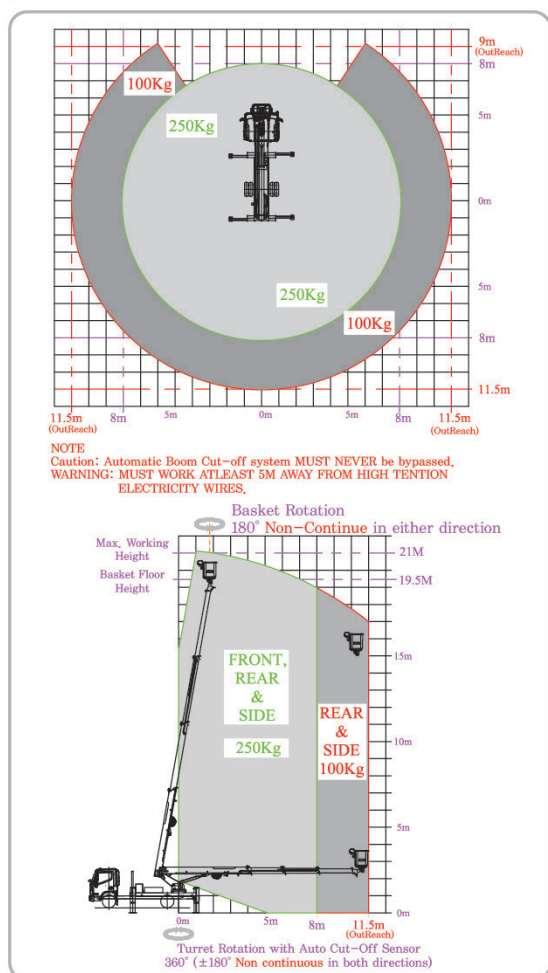
AERIAL ELEVATING WORK PLATFORM



SPECIAL REAR-MOUNT STYLE DESIGN FOR TRADITIONAL FLEXIBLE APPROACH

- Rear mounted Swing special design with multi-positioning H-H stabilizer system.
- Special Programless Automatic Cut-off system for Outrigger position based working area.
- Operator housing Hydraulic controls station on Turret.

WORK AREA DIAGRAM



SPECIFICATION

JINWOO210R SPECIFICATION			
Contents	Unit	Data	Remark
Permissible Mounting Vehicle	Ton	Min. 7.0 GVW	4x2
Max. Working Load	Payload	Kg	250 (OPTIONAL 200Kgs Crane Winch)
	Length	mm	5,810
Product's Dimension (with Vehicle)	Height	mm	3,580
	Width	mm	2,090
Working Area	Max. Height	m	20.5
	Max. Outreach	m/kg	8.5 - 250 / 11.5 - 100
Work Platform	Dimension L x W x H	mm	1,280 * 850 * 1,000
			1,850 * 950 * 1,100
	Rotation Angle	deg.	±100 / 360deg. Continuous
Boom	Type		Rectangular
	Number of Booms		4
Slewing Rotation	Extension		Hydraulic Cylinder, Chains
	Type		Slew Drive with Hydraulic Reduction Gear
Hydraulic Pump Drive Type	Rotation Angle	deg.	350 (±175)
	Engine		P.T.O
Outrigger	Width	mm	Front : 5,710 ; Rear : 5,910
	Extension		Hydraulic Cylinders, Wires
	Type		H - H
Operations and Controls	Type		Hydraulic Levers
	Remote control		Portable Radio Wireless

Note : The above specifications are bound to change without prior notification for better operators safety and due to changes in truck specifications.

JW180

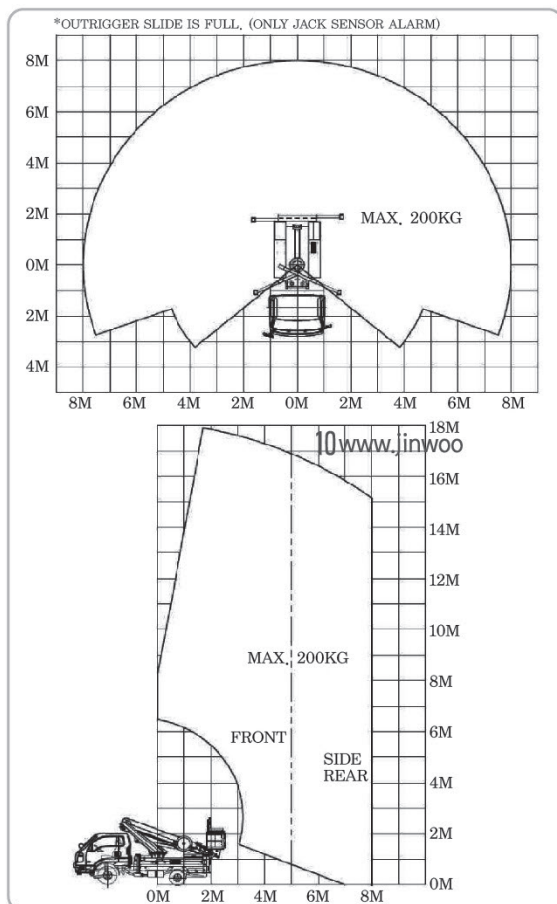
AERIAL ELEVATING WORK PLATFORM



HIGH LEVEL WORK CAPABILITY & EFFICIENCY WITH ALL CHAIN TYPE OF BOOM

- Suitable in the narrow working area. Greater mobility with compact 3.5 ton GVW truck.
- Boom material is DOMEX700 steel to minimize drooping
- H-H or X-H type outrigger.
- All of boom's extension & retraction are chain type for safety.

WORK AREA DIAGRAM



SPECIFICATION

JINWOO180 SPECIFICATION					
Contents		Unit	Type 1	Type 2	Remarks
Permissible Mounting Vehicle		Ton	Min. 5 GVW	Min. 3.5 GVW	4x2
Max. Working Load	Payload	Kg	220		Including 2 persons
Product's Dimension (with Vehicle)	Length	mm	6,450	5,640	Transport dimension
	Height	mm	2,750	2,610	
	Width	mm	2,050	1,980	
Working Area	Max. Height	m	18		Operator height
	Max. Outreach	m/kg	8.5 - 220 / 11.0 - 100		Outrigger Max. extended
Work Platform	Dimension (L x D x H)	mm	1,280 * 850 * 1,090		FRP Insulated
			2,460 * 1,000 * 1,100		Steel
	Rotation Angle	deg.	360deg. Continuous		±720
Boom	Type		Rectangular		Special treated
	Number of Booms		4	5	Telescopic
	Extension		Hydraulic Cylinder, Chains		Single stage
Slewing Rotation	Type		Slewing Bearing with Hydraulic Reduction Gears		Minimal backlash
	Rotation Angle	deg.	350 (±175)		Auto Cut-off
Hydraulic Pump Drive Type	Engine		P.T.O		Electric type
Outrigger	Width	mm	Front : 3,380 Rear : 3,380	Front : 3,250 Rear : 3,440	Different positioning
	Extension		Hydraulic Cylinder, Wire		
	Type		H - H	X - H	Optional
Operations and Controls	Type		Hydraulic Levers		All controls
	Remote control		Electronic Control Unit	Portable Radio Wireless	Upper controls only

Note : The above specifications are bound to change without prior notification for better operators safety and due to changes in truck specifications.

JW130/JW100

AERIAL ELEVATING WORK PLATFORM



STRONG AND SAFE WITH ALL CHAIN TYPE OF BOOM

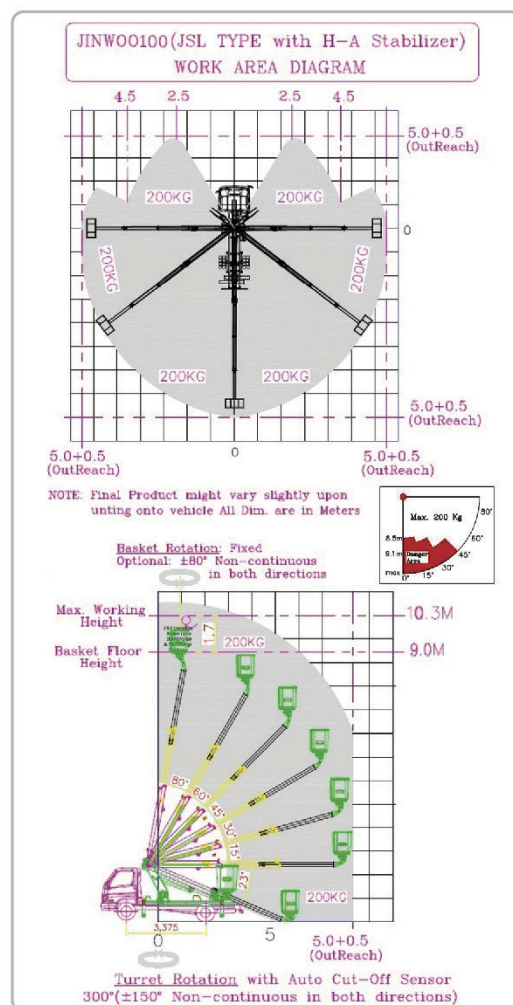
- One person is possible to work for telephone pole, electrical wire and communication line.
- H-A or X-H type outrigger.
- All of boom's extension & retraction are chain type for safety.

SPECIFICATION

JINWOO130 / JINWOO100 SPECIFICATION					
Contents		Unit	JW130	JW100	Remark
Permissible Mounting Vehicle		Ton	Min. 4.5 GVW Min. 3.5 GVW		4x2
Max. Working Load	Payload	Kg	220 200 (OPTIONAL 100Kgs Crane Winch)		Including 2 persons
Product's Dimension (with Vehicle)	Length	mm	5,515	4,100	Transport dimension
	Height	mm	2,380	2,370	
	Width	mm	1,745	1,960	
Working Area	Max. Height	m	13.2	10.2	Operator height
	Max. Outreach	m/kg	6.5 - 200 10.5 - 100	6.5 - 200 8.5 - 100	Outrigger Max. extended
Work Platform	Dimension L x W x H	mm	1,090 * 790 * 960 (20KV)		FRP Insulated
			1,820 * 800 * 1,100		Steel
	Rotation Angle	deg.	±80		±180 Optional
Boom	Type		Rectangular		4 edges
	Number of Booms		3	2	Telescopic
	Extension		Hydraulic Cylinder, Chains		Single stage
Slewing Rotation	Type		Slew Drive with Hydraulic Reduction Gear		Minimal backlash
	Rotation Angle	deg.	350 (±175)		Auto Cut-off
Hydraulic Pump Drive Type	Engine		P.T.O		Electric type
Outrigger	Width	mm	3,100		Different positioning
	Extension		Hydraulic Cylinders, Wires		
	Type		H-H / H-A		Patented
Operations and Controls	Type		Hydraulic Levers		All controls
	Upper controls		Electronic Control Box or Hydraulic Levers		Optional

Note : The above specifications are bound to change without prior notification for better operators safety and due to changes in truck specifications.

WORK AREA DIAGRAM



JWH3535

HIGH(SKY) LANDER



MAX. LIFTING LOAD IS 3.5 TON ! MAX. WORKING HEIGHT IS 37M !

- Possible to drive at high speed because of mounting truck.
- Possible to load mini forklift inside super-structure behind vehicle cabin.

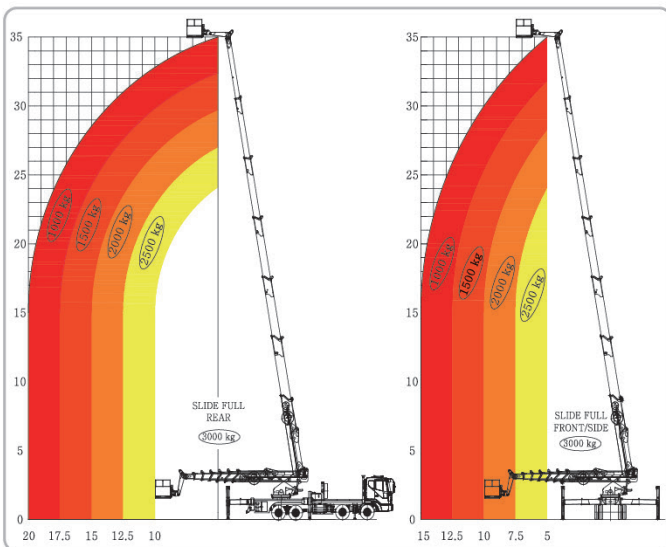


SPECIFICATION

JINWOOH3535 SPECIFICATION				
Contents		Unit	Data	Remarks
Mounting Truck		Ton	36 GVW	8X4 Axle
Working capability	Load	kg	3,000	Including 2 persons
	Length	mm	12,550	
Product's Dimension (with Vehicle)	Height	mm	3,970	
	Width	mm	2,500	
	Height	m	37	
Working Area	Radius	m/kg	10/3,000 ~ 20/1,000	
	Size(fixed)	mm	2,120*1,100*1,120	
Platform	Tilt angle		± 60	max.
	Shape	deg.	Square/round corner	
Boom	No. of booms		6	All Telescopic
	Extrusion type	no.	By 2 cylinder, chain linked	
Slewing Rotation	Type		Hydraulic	
	Angle		360	Continuous
Hydraulic Pump Drive Type	Engine	deg	P.T.O	
	Width		6,740 Front, 7,840 Rear	
Outrigger	Extension type	mm	By hydraulic Cylinder, wire	
	Shape		H-X Type	Special
	Type		By lever (in emergency)	
Valve control	Remocon		wired, wireless	Special

Note : The above specifications are bound to change without prior notification for better operators safety and due to changes in truck specifications.

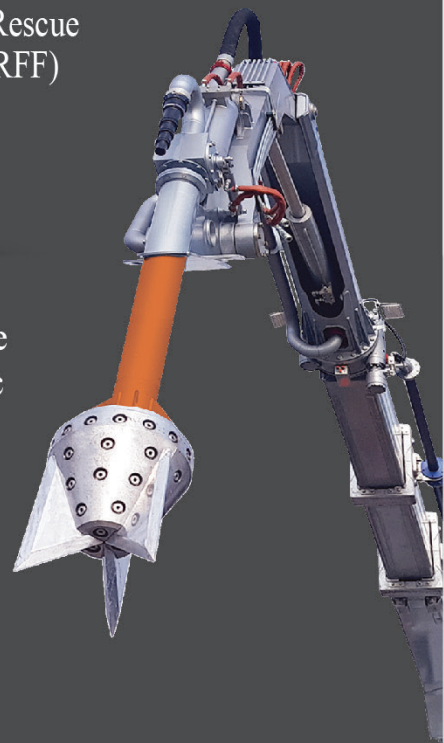
WORK AREA DIAGRAM



JINWOO SMC JWF K210A

Demolition and Rescue
Fire-Fighting (DRFF)
Vehicle

In the event of unexpected fire in a special zone with highly inflammable structures like in Chemical/Cement Plants, Oil and Natural Gas reserves etc first response is always key to control the fire and in such situation our specially research-developed world's rare Wireless Remote Controlled DRFF will first penetrate the structure through special Demolisher and then auto-spray the mixture of chemical Foam with water through Nozzle by auto-controlled CAFS(Compressed Air Foam System). Safety of Firefighters, Public as well as damage to property can be highly minimized due to rapid reaction in using DRFF



Firefighting Operations Highlights



Chemical Plant



Historical Wooden structures
buildings/monuments



Oil Refineries and Storage sectors



Complex structures/buildings



Fire Suppression



Demolition of Container



Penetration of Steel plate



Demolition of Concrete wall



Direct Water Jet



Water spraying

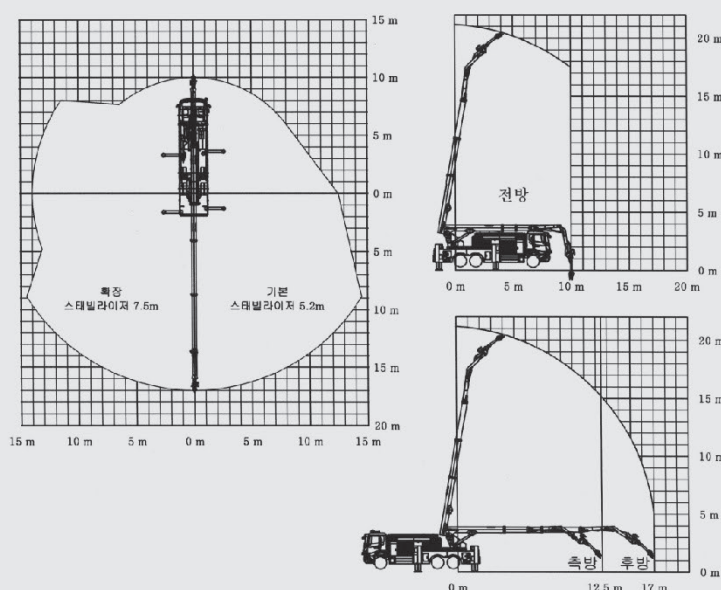


Foam spraying



Safety of Operation

WORK AREA DIAGRAM



SPECIFICATION

Overall Length / Height / Width	10,245 / 3,830 / 2,495 mm
Overall Weight (Configuration/GVW)	28,330 Kg
Water Spraying Demolisher Reach	21 m
Piercing Nozzle flow rate	4,500 ℓ /min
Power of demolition	Steel Plate(4 mm), Concrete(160 mm)
Fire Pump	5,300 ℓ /min
Water tank	2,000 ℓ
Foam tank (If CAFS provided)	400 ℓ
Outrigger	H - H Type (Single Push Auto leveling)
Extended width of Outrigger	5,200 mm (Extended 7,500mm)
Main Boom	Max. Angle 80° (Auto-stop)
Articulating Boom rotation	110° (Left / Right)
Slewing Rotation	Continuous
Lifting capacity	Rear(1Ton) / Side(0.5Ton) / Closed condition(1.5Ton)
Control Systems	Hydraulic, Mechatronic(using Wireless Remote Control) Auxiliary Engine. Automatic Stowage(One-Push button)
CAF System	Available (Optional)
Direct Water Spraying (Jet-Nozzle)	Automatic switching

Note : The above specifications are bound to change without prior notification for better operators safety and due to changes in truck specifications.

JINWOO SMC

JWF K320LS

● Firefighting aerial ladder vehicle
Telescopic boom type

Optimized for suppression of fire in the higher building & lifesaving. Possible to work in the narrow area by applying telescopic boom type. Possible to save a life rapidly by reducing lifting time)

- Possible to save a life at any direction because of 360° limited rotation of work platform
- Possible to work in case of outrigger's direct descending, minimized extension, individual extension
- Possible to operate individually outrigger's wireless remote control
- Minimized the maintenance & exchange period and acquired maximum safety by applying the semi-permanent boom chain
- Possible to enter rapidly into the narrow road by minimizing vehicle' length
- Possible to work at the maximum work radius & maximum height, compare with the other similar products
- Excellent efficiency of working in the narrow passage because of rear type work platform



Side working



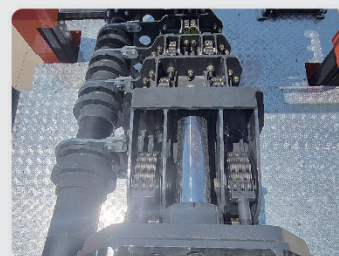
Rear working



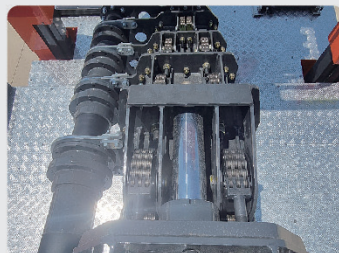
Maximum work radius 23m



Extension of outrigger's 2 step



All chain type boom



All chain type boom



Wired & wireless integrated remote control



Direct Water Shooting

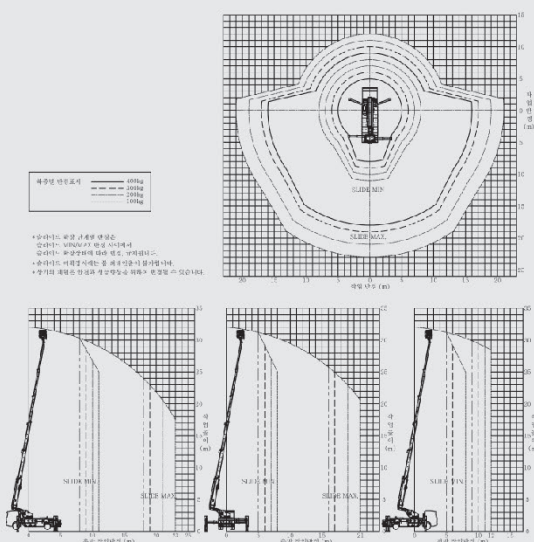


Water Spraying



Direct Water Shooting

WORK AREA DIAGRAM



SPECIFICATION

Overall length	8,670 mm
Overall height	3,780 mm
Overall width	2,490 mm
Vehicle gross weight	16,600 kg
Rated load	400 kg
Working height	32 m
Water spraying capability of water cannon	700 GPM (2,650 ℓ)
Platform's rotation	360° (limit)
Boom	(6 step interlocked, telescopic boom)
Slewing Rotation	360°(continuous)
Outrigger type	X-H Type(auto-levelling)
Outriggers extension width	6,700mm
Control system	Wired/wireless remote control

Note : The above specifications are bound to change without prior notification for better operators safety and due to changes in truck specifications.

JINWOO SMC

● Compact Boom Fire-Fighting Vehicle

JWF K190PLS

It's a multipurpose Firefighting vehicle equipped with water pump and tank to simultaneously extinguish fire and perform rescue operations. It has excellent mobility in case of complex 7floor building located in a downtown area with narrow constrained passage. Multipurpose lifesaving Firefighting vehicle with enhanced rescue operations and firefighting efficiency

- Multipurpose compact Firefighter with maximum capacity of Water and Foam tanks
- Rapid approach to narrow roads in the city center and excellent maneuverability enable simultaneous fire suppression and rescue operations
- Increased initial fire suppression capability through double supply and large capacity water tank
- Enhanced safety by applying automatic stowage type platform, automatically self-leveling, and easier entering into the Platform through secured rescue platform
- Automatic warning Light in Rescue Platform visually indicates and warns of self-leveling status of the platform
- Foldable type Rescue Platform allows easier driving as well smoother 360° (limited) rotation function to improve rescue efficiency
- Rescue Platform rated Capacity: 400Kg



KEY FEATURES



Compact Medium Weight vehicle



Double cabin



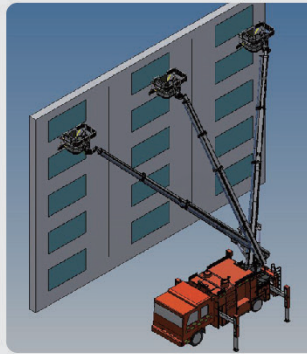
Rear Warning Lights(LED)



Automatic Water-Turret attached



Spacious Recue Platform (Max. 400Kg)



One position, wider reach



Master Central Control Station



Automatic water turret operations
(Spray / Jet)



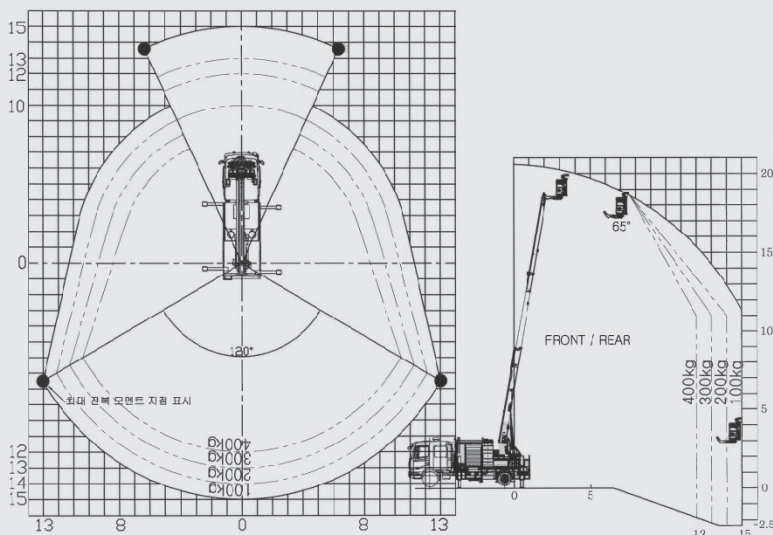
Side working



Rear working



WORK AREA DIAGRAM



SPECIFICATION

Overall Length / Height / Width	8,265 / 3,760 / 2,450 mm
Rescue Platform capacity	400 Kg
Working Height	19 m
Working radius (max.)	15 m
Water tank	1,800 ℓ
Foam tank	100 ℓ
Automatic Water Turret	700 GPM (2,650 ℓ)
Rescue Platform	620 x 1,670 x 1,000 mm
Boom	Interlock 3-step Telescopic (Chains connected)
Slewing Rotation	360 ° Continuous (Max. 720deg.)
Outrigger	H-H Type (Auto leveling option)
Extended width of outrigger	5,100 mm
Rescue Platform Control System	Electronic as well Portable Wireless Remote Control

Note : The above specifications are bound to change without prior notification for better operators safety and due to changes in truck specifications.

JINWOO SMC

JWF K180LS

● Compact Boom Fire-Fighting Vehicle

Most compact Boom Firefighting vehicle capable of reaching complex location through narrow passage where existing medium to large fire trucks cannot reach. Its Design-tested in market with least maintenance and service requirements due to minimal Mechatronic system and Chain system in 16 edged Booms for life-long operations without replacements

- 360deg. Continuous rotation of Rescue Platform for easier maneuvering and positioning of Rescue platform for faster efficient life saving
- Rescue Platform located at the rear allows faster rescue operations in constrained space
- Maximum outreach is possible by avoiding obstacles at height as Rescue Platform can move upwards in narrow space



KEY FEATURES



Emergency Auxiliary Engine



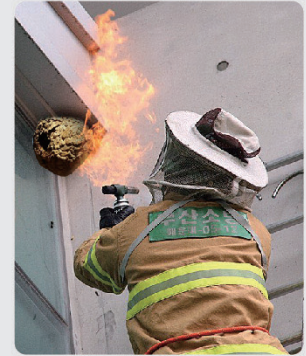
Rotation and Encoder detection





Automatic Self-defense
Spray system



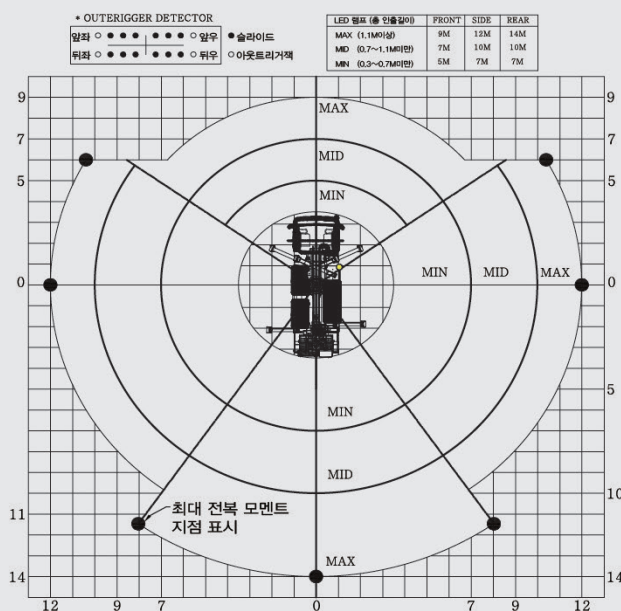
Rear sign board



Rescue Platform 360 deg. Rotation

7F		7F	7F		7F
6F		6F	6F		6F
5F		5F	5F		5F
4F		4F	4F		4F
3F		3F	3F		3F
2F		2F	2F		2F
1F		1F	1F		1F

WORK AREA DIAGRAM



SPECIFICATION

Overall Length / Height / Width	7,060 / 3,375 / 2,205 mm
Rescue Platform payload capacity	400 Kg
Rescue Reach Height	18 m
Automatic Water Turret	700 GPM (2,650 ℓ)
Rescue Platform	1,070 x 1,560 x 1,100 mm
Rescue Platform rotation	360 ° (Limited)
Boom	Interlock 4-step Telescopic (Chains connected)
Turn-Table rotation	360 ° Continuous (Max. 720deg.)
Outtrigger	X-H Type (Auto leveling option)
Extended width of Outtrigger	4,450 mm
Rescue Platform Control System	Electronic as well Portable Wireless Remote Control

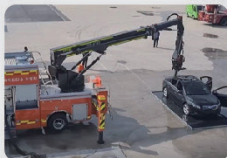
Note : The above specifications are bound to change without prior notification for better operators safety and due to changes in truck specifications.

JINWOO SMC JWF K150

Firefighting vehicle for suppression of fire especially for electric passenger car

Specialized firefighting vehicle for suppression of fire of electric passenger car by direct shooting water inside car & it's battery after lifting car by crusher and piercing nozzle

- Possible to shoot directly inside car by attaching piercing type destruction tip
- Possible to shoot water in the course of vehicle's driving by attaching auto cannon in the upper/lower area of truck cabin
- Attached auto-converting system for direct shooting and spraying
- Acquired safety for firefighting man by wired & wireless integrated remote control
- Possible to penetrate 2mm steel plate by demolisher tip located in the top of nozzle



Perforating roof by the piercing destruction tip



Suppression of fire for vehicle



Water Spraying



Direct Water Shooting

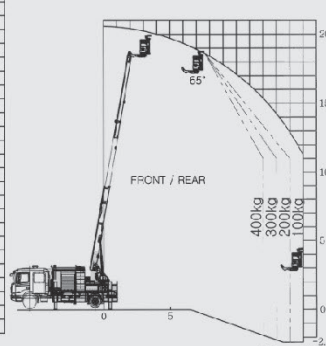
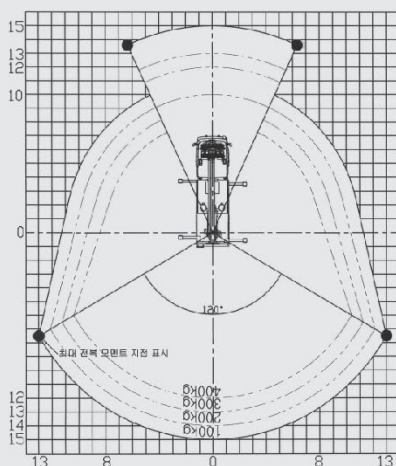


Multi- purpose water cannon



Connective movement by remote control 3 kinds of direct water shooting & spraying

WORK AREA DIAGRAM



SPECIFICATION

Overall length	8,500 mm
Overall height	3,900 mm
Overall width	2,480 mm
Wheel base	4,430 mm
Horse power	320 hp
Working height	15 m
Front water cannon	2,500 LPM
Water tank capacity	1,800 L
Foam tank capacity	100 L
Boom type	Telescopic 2 step + articulating 1 step
Rotation angle of articulating boom	Left / right 110°
Outrigger	H Type(Auto-levelling)
Nozzle	Spraying & piercing
Destruction capacity	Steel plate 2 mm
Slewing Rotation	360° continuous
Remote control	Wired & wireless integrated

Note : The above specifications are bound to change without prior notification for better operators safety and due to changes in truck specifications.

JINWOO SMC JWF K010

- Firefighting vehicle for suppression of fire especially for electric passenger car

Possible to suppress fire at the first stage of fire for the electric car in the narrow area like as under-ground parking area which is very difficult to enter because of restriction of height by attaching traction device & firefighting pump

- Attached spraying system in the traction device which is possible to spray into the battery located in the lower part of car
- Attached spraying system of vehicle
- Attached self- air suspension of vehicle
- Possible to tow away in spite of damaging wheel and diagonal type



Spraying system of traction device



Traction after damaging wheel



Traction in diagonal type



Verification experiment 1



Verification experiment 2

SPECIFICATION

Overall length	5,050 mm
Overall height	1,830 mm
Overall width	2,080 mm
Passengers	2 persons
Firefighting pump	Moving pump 12-2(16ps) Using pressure : 5kg/cm Maximum pressure : 7kg/cm Using hydraulic flow : 550L/min
Water tank capacity	300 L
Foam tank capacity	20 L
Traction device	500 kg (Both manual & wireless)
Winch	2,700 kg (Both manual & wireless)
Spraying system of vehicle	Spraying on the left, right, rear part of vehicle

Note : The above specifications are bound to change without prior notification for better operators safety and due to changes in truck specifications.

AML SYSTEM



WARNING LAMP



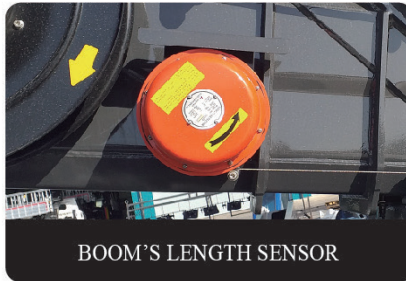
BOOM'S ANGLE SENSOR



RECEIVER OF REMOTE CONTROLLER



MAIN CONTROL PANEL BOX



BOOM'S LENGTH SENSOR



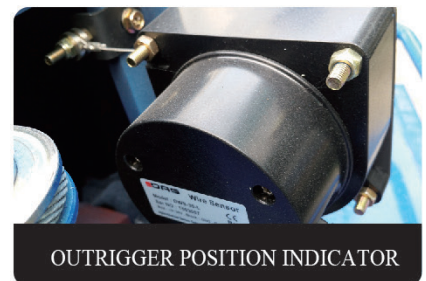
BOOM OUTRIGGER INTERLOCK SENSOR



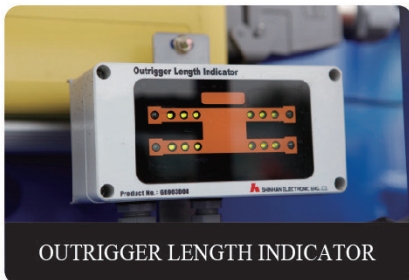
AML CONTROL BOX



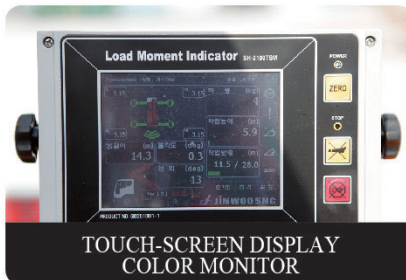
PLATFORM'S LOADING CAPACITY IS 400KG INCLUDING 3 PERSONS



OUTRIGGER POSITION INDICATOR



OUTRIGGER LENGTH INDICATOR



TOUCH-SCREEN DISPLAY COLOR MONITOR



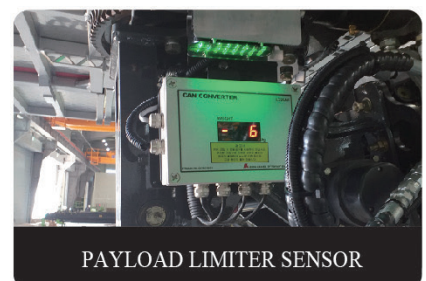
EMERGENCY STOP/ENGINE START / RPM / PTO SWITCHES



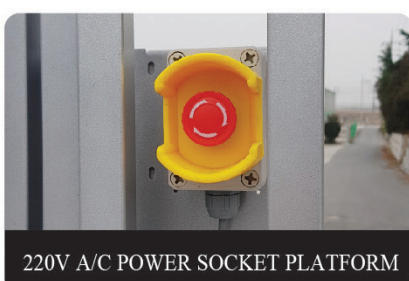
HYDRAULIC OIL COOLER



DC EMERGENCY PUMP



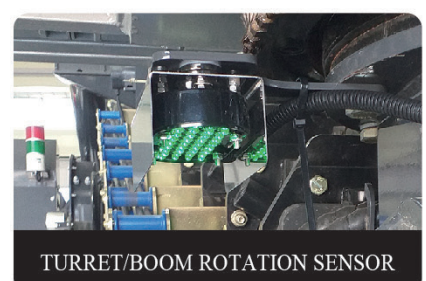
PAYLOAD LIMITER SENSOR



220V A/C POWER SOCKET PLATFORM



GROUND STATION CONTROL WITH OPERATOR SEAT



TURRET/BOOM ROTATION SENSOR

EXPORTED ONLY MACHINE & MOUNTED ON LOCAL TRUCK

Machine only



Machine Delivery



Local Mounting



At client site after mounting



 JINWOO SMC CO., LTD.